



# The Adelph<sup>h</sup>ean

OF ALPHA DELTA PI SUMMER 2016

Cristi Curlee Holcombe  
Charms Homes  
Across the Country



## FROM THE DESK OF THE INTERNATIONAL PRESIDENT

Recently I had the honor, and the pleasure, of participating in the installation of Iota Alpha chapter at the University of Texas, San Antonio and the initiation of the charter members and an alumna initiate. Participating in the installation process—including initiating colony members—is always a highlight of my volunteer experience. The enthusiasm of the members on the eve of initiation and installation is always inspiring, regardless of how many times I have been privileged to participate in the process.

While preparing for the installation weekend, I began thinking about the early history of the Adelphean Society—specifically how it expanded beyond Wesleyan Female College. As you may recall, the Adelpheans remained a “local” society for 53 years. *Loyally, Volume I* reports that “on



May 15 the committee was appointed to consult President DuPont Guerri about getting a charter to become national . . .” *Sisters* states that “[i]n the fall of 1904, even before they voted to change their name, the Adelpheans were already considering various campuses for expansion. It was moved and seconded that, ‘a committee be appointed to write to Agnes Scott in regard to establishing a chapter there.’ The December 5 minutes state, ‘[w]e discussed establishing a chapter at Converse.’”

For now unknown reasons, chapters were never established at Agnes Scott or Converse, but the determination of our sisters to expand remained undiminished. On March 25, 1905, two members of Alpha chapter installed Beta chapter at Salem College in Winston-Salem, North Carolina.

The decisions to “go national” and change the society’s name to Alpha Delta Phi represented significant changes. In deciding to “go National,” the Adelpheans had clearly adopted a new “strategic plan,” although the phrase “strategic plan” was undoubtedly unfamiliar to them. Generations of sisters remain thankful for the vision and courage demonstrated by our predecessors who made the decision to implement that new strategic plan.

The 2015-2017 Strategic Plan crafted by Grand Council does not contain any change as monumental as the decision to “go National,” but nonetheless it contains important objectives. The overriding objectives are: (1) “[o]ptimizing the member experience at every stage of membership to promote Alpha Delta Pi as a way of life and enable heightened success for each chapter to provide the foundation for a meaningful member experience;” and (2) “[m]aximiz[ing] the development and allocation of human and financial resources to ensure long term success and stability.” Grand Council is deeply committed to using the Strategic Plan as our guidebook throughout the biennium and charting our progress in accomplishing the tasks set forth in the accompanying tactical outline to achieve the objectives of the Strategic Plan. I hope each sister will read the *Adelphean* article on page 10 about the plan and commit herself to helping the organization achieve the objectives set forth to ensure that Alpha Delta Pi remains First. Finest. Forever.

Loyally,

Stacy Bruton  
International President



### GRAND COUNCIL

INTERNATIONAL PRESIDENT	Stacy DeMartini Bruton, ΔΣ 401 Picone Drive Harahan LA 70123
INTERNATIONAL VICE PRESIDENT OF COLLEGIATE MEMBERSHIP	Debbie Tilson Gill, ΓΦ 301 Echo Circle Easley SC 29642
INTERNATIONAL VICE PRESIDENT OF COLLEGIATE MEMBERSHIP	Jan Alexander Maisch, ΕΩ 140 Muirfield Drive Ponte Vedra Beach FL 32082
INTERNATIONAL VICE PRESIDENT OF ALUMNAE MEMBERSHIP	Jana Andriano Clayton, ΖΠ and ΔΓ 3016 Devonshire Cove Germantown TN 38139
INTERNATIONAL VICE PRESIDENT OF COMMUNICATIONS	Jennifer McGhee Siler, ET 306 Tackwood Trail Maryville TN 37803
INTERNATIONAL VICE PRESIDENT OF FINANCE	Emily Erkel, ΖΧ 2515 Kavanaugh Blvd. Little Rock AR 72205
INTERNATIONAL VICE PRESIDENT OF ORGANIZATIONAL RELATIONS	Sandy McDonald Davis, Ξ 5 Ivanhoe Avenue Dayton OH 45419-3808

### EXECUTIVE OFFICE

ALPHA DELTA PI EXECUTIVE OFFICE	Linda Welch Ablard, ΑΟ Executive Director 1386 Ponce de Leon Avenue, NE Atlanta GA 30306 404-378-3164 email: info@alphadeltapi.com
ALPHA DELTA PI FOUNDATION	Jennifer Polley Webb, ΕΝ Executive Director 1386 Ponce de Leon Avenue, NE Atlanta GA 30306 404-378-3164 email: foundation@alphadeltapi.com

### ADELPHLEAN STAFF

ADELPHLEAN EDITOR	Elizabeth Lewis Wright, ΓΦ 2350 Cypress Pond Road #1209 Palm Harbor FL 34683 email: adelphleaneditor@gmail.com
FEATURES EDITOR	Ellen Long Liston, ΑΚ 6909 Government Farm Road Knoxville TN 37920 email: ellenadair1@gmail.com
CHAPTER EDITOR	Ann Parker Davis, ΕΣ P.O. Box 285 East Millinocket ME 04430 email: apdavis@pwless.net
ALUMNAE EDITOR	Susan Jervis Kennedy, Π 4709 Soule Place Gulf Breeze FL 32563 email: susanjkenedy@bellsouth.net
ART DIRECTOR	Tom Ford 1000 Stoney Ridge Road Dadeville AL 36853

If you have a comment about any of the articles in this issue,  
we invite you to write the editor at the address above.

## In This Issue

### Cover Story

Charming the Homes of Others 4

### Features

For the Greater Good 6

Iota Alpha Installed 8

Stories of Sisterhood 12

Mastering the Art of Conversation 14

Alpha Gamma Centennial 16

Alpha Zeta Centennial 25

Start the Conversation —  
Alcohol on Campus 50

### Departments

ADPi Strategic Plan 10

Foundation Scholarship Recipients 18

Alpha Delta Pi...We Believe 20

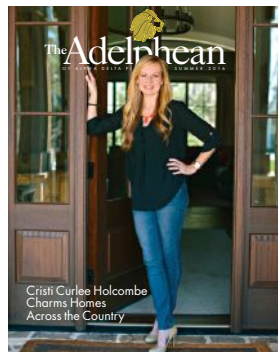
Potential Member Profile 21

Legacy Introduction 23

On Campus 26

Sisters 47

Notable News 52



#### ON THE COVER:

Cristi Curlee Holcombe spent three seasons as the Production Designer on HGTV's Emmy Award-winning show *Elbow Room*.



Go Green and  
Recycle Your Magazine



FRATERNITY  
COMMUNICATIONS  
ASSOCIATION



Visit us online at  
[www.alphadeltapi.org](http://www.alphadeltapi.org)



*The Adelphcan* of Alpha Delta Pi is a quarterly educational journal of college life and alumnae achievement. It is the official publication of Alpha Delta Pi sorority, oldest secret society of college women in the world, founded May 15, 1851, at Wesleyan Female College, Macon, Georgia, the world's first chartered college for women.

# Charming the Homes of Others

Cristi Curlee Holcombe Shares Her Experience on HGTV

By ELLEN LONG LISTON  
*Adelphean* Features Editor

When Cristi Curlee Holcombe, Gamma Phi—East Tennessee State, was growing up in a small town in central Alabama, she had already begun her interest in the design field. She just didn't know that she would be able to make a career out of choosing colors and swatches and creating design magic—whether in her own design firm, Cristi Holcombe Interiors, through her interior design blog *Charm Home*, or on the HGTV show *Elbow Room* for three seasons.

"I did start with rearranging my rooms and picking out decorating elements for them when I was very little. At that point, it was just something fun to do."

In college, she realized after her first semester that

she was spending much more time watching design shows on television than what her friends were viewing. "I found out that interior design was actually a major. Sounds crazy but I never knew that was something you could go to school for until then. People didn't really hire designers that I knew of in small town Alabama!"

Her design firm based in Atlanta has allowed her to work with some amazing clients over the years. "Probably my favorite project to date was my Riverview home project. This client was one of my very first when I started my own company; she had heard about my blog through a local contest where I had won best blog. She contacted me about designing







her two kids' rooms and their playroom and then worked on a few other areas for her. (Later) she pretty much gave me free reign to design her dream home. It was an amazing project to work on."

When Cristi was eight months pregnant with her oldest child, a friend of her husband, Billy, sent him a tweet from HGTV that the network was looking for Atlanta female design talent for a new show. "He sent it to me, and I sent my bio, headshots, and portfolio, not thinking I would ever hear back." Several weeks later, HGTV contacted her and said they would reach out if she made the cut.

Fast forward two weeks to her son Chase's birth. "I was in the hospital; my cell rang, so I picked it up—not having any clue it would be Chip Wade, HGTV host and designer," Cristi recalls. "The whole conversation was pretty much a blur, but I did get the part where he said they wanted me to come in and audition in two weeks." Cristi left her baby for the first time two weeks later and auditioned. A week later, she found out she had the job and would be starting design work for the pilot episode a week later. She filmed three seasons—39 episodes—of *Elbow Room* for HGTV and loved it.

"I was pregnant for the entire third season with my daughter, Hayden, and knew there was no way to run my company, be an HGTV designer, and a mom to two kids unless I wanted to do each really poorly. I bowed out of filming the fourth and final season of the show to focus on my then new daughter, family, and business." This creative sister says she's still close with the cast and crew and often collaborates on design projects with the carpenters from the show and Chip, the host.

Cristi says she had no idea what it was like to be a television designer until she actually was one. "I wasn't

just a designer; I was a project manager, painter, carpenter, window treatment fabricator, and everything in between. It is so much more than looking pretty on camera and making a room look pretty."

Her favorite part of each *Elbow Room* show was reveal day. "Seeing a homeowner's face through a monitor while they are seeing their home for the first time after it has been completely transformed is absolutely magical and everything you think a TV show would be about. Chip would be walking the homeowners through their space, and everyone else would be huddled in a small room waiting for them to either have a burst of excitement or burst into tears of joy or both. It was truly amazing to be a part of that."

Cristi says her next dream to fulfill is owning a storefront for her design business. "We'll see if that ends up being in the cards, but I'm really hoping that in the next few years it will happen."

This sister says that being part of Alpha Delta Pi in college played a major role in shaping her into the businesswoman she is today. "Being involved with a group of women who know their self-worth and are very confident about who they are is so important. Alpha Delta Pi was just that—a group of smart, talented, and driven women who knew they wanted to excel in life."

Cristi's chapter sisters have remained her closest friends, and nine of them go on a "girls' trip" every September. "These girls are the best group of friends a girl could ask for. We were all in or at each other's weddings, have seen each other through good times and really bad times and have watched each others' families. We have a text group, and rarely a day goes by that we don't text each other something—whether it's to ask for prayers, send a funny quote or pic or just check on each other. It's amazing that we can go from joining ADPi to still be connected and share 17 strong years of friendship."



# For the Greater Good

## Delta Delta Alumna Leslie Rutledge Serves as the First Female Attorney General of Arkansas

By SUSAN JERVIS KENNEDY  
*Adelphian Alumnae Editor*

Elected as the 56th attorney general for the state of Arkansas in 2014, Leslie Rutledge, Delta Delta—Arkansas, became the first woman and first Republican in the state's history to serve in the office. A graduate of the university's William H. Bowen School of Law, Leslie began her legal career as clerk for Arkansas Court of Appeals Judge Josephine Hart, followed by a stint working as deputy counsel for Governor Mike Huckabee, and later serving as legal counsel for his 2008 presidential campaign. "No one outworks Mike Huckabee," remembered Leslie. "As governor and a presidential candidate, he had a strong philosophy that he would not ask staff to do something he was not willing to do himself, and he believed that you finish something just as strong as you start it." Leslie consulted with Governor Huckabee before she decided to



Leslie Rutledge was sworn in as the first female attorney general of Arkansas.



Leslie served on Governor Mike Huckabee's presidential campaign as his legal counsel.

run for attorney general, and said his response gave her the confidence she needed to go ahead. And that's not Leslie's only politically-related experience—she also served as deputy counsel for the National Republican Congressional Committee before joining the Republican National Committee as counsel.

While living in the Delta Delta chapter house, Leslie served as spirit chair and was very active in philanthropic events supporting the Ronald McDonald House. "Being an ADPi is like having a family away from home," she remembered fondly. "Whether it was a broken heart or a disappointing grade, my sorority sisters were always there for me, because, just as we said, we live for each other."

Leslie also has been greatly impacted by ADPi alumnae and is very grateful for their commitment to the sorority and everything it holds dear. She credits her overall Alpha Delta Pi experience with shaping who she now is as an adult and making her an effective lawyer and attorney general. "The sorority helped me learn how to be a leader and resolve disagreements. . . and know that at the end of the day, we will still come together for the greater good of the organization."



# BOUTIQUE GREEK



OFFICIAL PREFERRED VENDOR

alpha members | advisors | alumnae  
bid day | boyfriend | diamond sisters  
formal favors | legacy + youth | officers  
mom & dad | seniors | custom designs

shop

[www.boutiquegreek.com](http://www.boutiquegreek.com)

email

[hello@boutiquegreek.com](mailto:hello@boutiquegreek.com)

follow

@boutiquegreek

instagram | twitter | facebook

snapchat | pinterest

want your photo to be featured?  
tag us for the chance!



a



b



c



d



f



e

**featured follower photo credit** | featured product

a | @delaneyyboucherr | classic blanket | \$29.50

b | @c0urtiepie | crest quarter zip | \$49.50

c | @concon\_wi | stitched crewneck sweatshirt | \$37.50

d | @heather\_nicole\_96 | creed long sleeve tee | \$26.50

e | @jizelle.chloe | foil frame tank | \$22.50

f | @lauuuurr | classic sweatshirt | \$36.50



# Iota Roll Commences With the Installation of Iota Alpha at The University of Texas, San Antonio

By JENNIFER SMITH DICKINSON  
Growth and Development Manager and  
ELIZABETH WRIGHT, *Adelphean* Editor with  
JORDAN MILLER, 2015-16 Leadership Consultant

On Saturday, April 9, 2016, members of Grand Council, the New Chapter Development District Team, and other alumnae and collegians installed Iota Alpha chapter at The University of Texas, San Antonio. Founded in 1969, UTSA has quickly risen through the ranks to become internationally known for its research programs and diverse student population. Alpha Delta Pi joins six NPC sororities, eight IFC fraternities, seven NPHC organizations, and nine multicultural Greek

groups on campus. The colony members participated in numerous campus activities, including student government, service group VOICES, Ambassadors, and a number of honors societies. The women placed third in Greek Week and were named New Chapter of the Year at UTSA. They volunteered at the Ronald McDonald House and raised money for RMHC by selling water bottles at Fiesta UTSA.

Stacy DeMartini Bruton, International President; Jan



Members of Grand Council, the New Chapter Development District Team, international officers, and area alumnae initiated 74 women as the charter members of Iota Alpha chapter at the University of Texas, San Antonio, on April 9, 2016.





The newly initiated charter members of Iota Alpha welcomed family, friends, and alumnae to an installation banquet at the Fair Oaks Ranch Golf and Country Club.

Alexander Maisch and Debbie Tilson Gill, International Vice Presidents of Collegiate Membership; and Susan Mathews, District Team Director of the New Chapter Development District Team presided over the initiation ceremonies for the 74 charter members. Also initiated as an alumna was Sandra Castro Farhart, mother of Iota Alpha Standards Advisor Jordan Farhart. Collegiate and alumnae members provided initiation assistance, including alumnae from the San Antonio Alumnae Association and collegians from Delta—Texas, Epsilon Zeta—Texas State, Delta Mu—Sam Houston State, Epsilon Epsilon—Texas Tech, Gamma Upsilon—North Texas, Zeta Chi—Baylor, and Zeta Lambda—Texas A&M. The installation of this chapter marked the first new chapter installation during Mrs. Bruton's term as International President.

Joining the presiding officers were Sandy Roland, District V Team Director; Dawn Victor-Herring, Foundation President; Karen Galentine and Ami Wallace, Collegiate Province Directors; Lindy Cash and Rise Candelaria, Panhellenic Relations Directors; Rebecca Gentry, Recruitment and Marketing Director; Jennifer Dickinson, Growth and Development Manager; and Jordan Miller, Mary Beth Miller, and Kaley Tabor, Leadership Consultants.

Charter members welcomed their family, friends, chapter advisors, San Antonio Alumnae Association members, and university administrators to the Installation Celebration the morning following initiation

at the Fair Oaks Ranch Golf and Country Club in Fair Oaks, Texas. Attending for the university were Dr. Barry McKinney, Director of Student Activities, and Amanda Ramon and Julie Bunson, Program Advisors. During the celebration, Mrs. Bruton conducted the ceremony to install the new chapter officers and presented the new chapter president, D'Nae Brotherman, with the chapter's charter. Mrs. Victor-Herring presented the university with a gift from the Alpha Delta Pi Foundation, and the chapter presented a video slideshow of their activities in the preceding weeks.



International President Stacy DeMartini Bruton presented Iota Alpha President D'Nae Brotherman with the chapter's charter.

# The 2015-2017 Strategic Plan

Earlier this year, Grand Council finalized the Strategic Plan for the 2015-2017 Biennium. During this process, Council remained committed to taking a more inclusive approach to crafting the plan and solicited input from the members of the Strategic Leadership team as well as Foundation President Dawn Victor-Herring. After reviewing that feedback, Grand Council adjusted the plan and completed a tactical outline—an integral part of the implementation of the Strategic Plan.

The Strategic Plan will be used not only to establish and communicate the strategic goals of the sorority for this biennium to all international officers and members, but it also will be used as the touchstone for prioritizing actions and allocating resources, both human and financial. Grand Council envisions and expects that the Strategic Plan will be reviewed and relied upon by all Alpha Delta Pi leaders, including chapter officers, alumnae officers, and international officers, in determining areas of focus and addressing progress and success as an organization.

The Strategic Plan itself establishes objectives for the biennium and broad areas for work, but does not set forth the specifics of how to achieve the objectives. The tactical outline assigns ownership of various projects under the Strategic Plan and establishes a timeline for the identified owner(s) to provide Grand Council with a plan designed to achieve the project designated in the tactical outline. Grand Council is convinced that with this plan Alpha Delta Pi will be better positioned to serve sisters at all stages of membership and remain competitive with our peer groups in the National Panhellenic Conference.

## ALPHA DELTA PI 2015-2017 STRATEGIC PLAN

### OUR VISION:

*Alpha Delta Pi Is a Way of Life*

### OUR MISSION:

*Established in 1851, Alpha Delta Pi is committed to sisterhood, values and ethics, high academic standards, and social responsibility.*

### OBJECTIVE I:

#### ENHANCED MEMBER EXPERIENCE

*Optimize the member experience at every stage of membership to promote Alpha Delta Pi as a way of life and enable heightened success for each chapter to provide the foundation for a meaningful member experience.*

#### COMMITMENT AND ENGAGEMENT

- ◆ Measure successes of Alpha Education program based on Alpha member feedback and Alpha retention rate.
- ◆ Redesign and implement comprehensive Delta member experience programming.
- ◆ Educate alumnae sisters concerning the broad spectrum of ways to engage in Alpha Delta Pi.

TM



## LEADERSHIP AND TREND RECOGNITION

- ◆ Provide leadership training and resources for collegians and alumnae members.
- ◆ Engage with National Panhellenic Conference peers and college and university personnel to understand campus and Greek trends.
- ◆ Heighten our presence within the National Panhellenic Conference and Greek and higher education conferences through leadership positions and presentations at conferences.

## CHAPTER SUCCESSES

- ◆ Develop and implement professional recruitment and marketing systems and tools.
- ◆ Develop and implement a targeted retention plan for chapters with membership cancellation rates exceeding 10%.
- ◆ Recruit and retain chapter officers by developing succession planning initiatives and skill-based office recommendations.
- ◆ Develop and implement an enhanced Officer Transition Workshop.

## OBJECTIVE II: RESOURCE MANAGEMENT

*Maximize the development and allocation of human and financial resources to ensure long-term success and stability.*

### CASH FLOW

- ◆ Develop balance sheet strategic plan to ensure ability to maximize investment opportunities in housing, member support and chapter growth.
- ◆ Increase awareness of Greek Licensed vendors to produce additional royalties and to protect our trademarks. Royalties.
- ◆ Partnership with the Alpha Delta Pi Foundation
- ◆ Develop 2-year projection for desired educational program funding.
- ◆ Promote establishment of academic scholarship for each chapter.

### VOLUNTEER STAFF

- ◆ Design volunteer roles to focus on worthwhile work designed to promote success.
- ◆ Implement a sustainable subject matter expert resource program.

### TECHNOLOGY

- ◆ Evaluate and redesign processes impacting members to fully utilize Pi Portal functionality.
- ◆ Design and deploy member campaign to capture professional skills and volunteer interest from alumnae in each member's account in the database.
- ◆ Develop online Potential Member Profile Form and Legacy Introduction form with electronic delivery to chapter.

### COMMUNICATION

- ◆ Develop an archive on the website of programming and workshops which will be available to all members.
- ◆ Increase followers on social media by producing meaningful and educational campaigns.
- ◆ Create communication plan where announcements, memoranda, bulletins, and publications are disseminated through Executive Office and accessed on our website.
- ◆ Develop communication templates for chapters, alumnae associations, house corporations, advisors, and International Officers.

# Stories of Sisterhood

By SUZANNE WARNER O'GWYNN  
Epsilon Tau—Middle Tennessee State University

*The Adelphean* is pleased to share this Story of Sisterhood from Suzanne Warner O'Gwynn. Last summer, a group of 18 alumnae from Epsilon Tau at Middle Tennessee State planned a reunion cruise to the Bahamas, picking right up where they'd left off at the end of their collegiate ADPi experience.

The trip was so much fun, and I'm really glad I went. I only tried to back out three times in the last year. My husband even asked me at the airport, "Are you going to actually get on the plane?" because he

knew I was a nervous wreck. I've probably put on 100 pounds since college, and that's never a confidence builder. As soon as I saw everyone, all the anxiety just melted away for me. It was almost like I had seen these people the day before at the MTSU grill—and yet we were 28 years older. There was something kind of great about reconnecting with these women that I lived with, ate every meal with, cried with, laughed with, shared clothes with, went to parties with and grew up with . . . basically did everything with during a few very important years of my life.

I'm so grateful for those college years . . . and it was so good seeing everyone again and catching up. It was a non-stop talkfest. And of course we had to stop and get a group picture while throwing diamonds at every



Eighteen Epsilon Tau alumnae rekindled old friendships on a sisterhood cruise to the Bahamas.



possible moment. I know a lot of sisters wanted to go on the trip but just couldn't work it out. Some may have even felt like me, insecure and unsure about revisiting the past.

I turned 50 right after the trip, and being with all of those old friends again truly felt like I had come full circle. I thought it might be depressing . . . that I hadn't done enough or accomplished enough or stayed thin enough. Honestly, I was unable to fulfill most of the dreams and aspirations I had in my 20s. But I didn't dwell on that or feel bad about that—everyone was very accepting. I think we have all changed . . . we've grown older and had wonderful experiences in our lives, done things we are proud of but also had great tragedies and disappointments that dropped us to our knees and made us beg for mercy. And now with maybe a few more wrinkles or a few more pounds . . . we could recognize everyone as having changed and grown and yet still be much the same person we remembered from long ago. It's really hard to put into words what the trip meant to me.

On the last night of our cruise as we headed back to Miami, I stood at the back of the boat alone for a few minutes and watched us move through the water and looked back at where we had been. I felt us moving forward, and it was very symbolic of life as I looked at the vast ocean around me. I said a small prayer to God that I was so grateful for the impact these people had on my life and still had. I thanked God for letting me live to be 50 and get to share this moment and all the moments I've had in this lifetime. I have been blessed; although some days I've felt cursed when feeling sorry for myself, but deep down I know I am truly blessed. We are getting older, and we are running out of time—that's just a fact.

At the end of the trip after we got back to Miami, I looked around at everyone that I had traveled with—all of those friends. I saw them as they were 28 years ago and who they are today. I pulled out my iPhone and listened to a song that I listened to at 20 and wanted to hear it from the perspective of a 50 year old. It's titled "Forever Young" by Alphaville. It made me cry bitter-sweet tears for who we were and who we are now. I'm



Visiting the beach and sharing fun times on the cruise allowed for opportunities to showcase the sisterhood that picked right up where it left off 28 years earlier.

thankful for all of you . . . those that went on the trip and those that were unable to. You meant so much to me then and you still do. I have never forgotten that time in my life and those friendships.

On the boat heading back to Miami, Jennifer Lawson Dye volunteered to compete in a dance-off with six 20-something-year-old women. I think in a brief moment she was terrified as she watched the other young women dance, and I was a little terrified for her. She was the last to perform, and I must say she had some pretty tough competition. I honestly thought *what is she going to do?* All I can say is Jennifer made us proud. She was amazing. She won the contest as we cheered her on. I went up to a few of the young women that she defeated, and I said, "You guys did great. You were probably the real winners." I told them we'd known each other since we were in college. They told me that they looked at each other and our happy cheering group while Jennifer was dancing and said, "That is who we want to be. That is our goal to be them when we are their age." They actually bowed to us as if to say, "we're not worthy." It was a beautiful moment where young women and middle-age women really connected and realized we are all really the same. We were once them and they will someday be us. As we cheered Jennifer on, I truly felt... Forever Young. And her victory was a victory to each of us.

I love all of you. And I hope we see each other again soon.

# Mastering the Art of Conversation: Seamless Small Talk

By KATHERINE LEVASSEUR, Gamma Tau  
Recruitment and Marketing Director III

It's no secret that sorority recruitment is one of the best training grounds for professional networking, nailing that job interview, or making friends in a new city.

After four years of formal recruitment, countless COR dates, and more than your fair share of recruitment small talk, you're told it will pay off big time when you're a stellar conversationalist at your first job, at networking events, or as the ringleader of a new group of friends. All four years of chant learning, long workshops, and late nights were secretly teaching you a life skill so prized by millennials—the ability to have a conversation with *anyone* about *anything* for *any length of time*.

How do we do it? By remembering that we're ADPi sisters when we engage in Seamless Small Talk.



## A: Approachable, Appropriate, Attitude

Keep your body language approachable: open, relaxed, and pleasant. Casual eye contact and a warm smile demonstrate your interest in engaging with others. If you've met someone before, do your very best to remember her name. If you forget, keep a positive attitude and discretely ask another person or say, "I'm so sorry, I've drawn a blank." Keep the conversation tone positive and the topic suitable for professional settings. Just like formal recruitment, there are appropriate and inappropriate topics for a professional setting.



## D: Draw the Other Person Out

In the age of smartphones and constant digital connection, your undivided attention is one of the highest compliments you can give someone. The more you focus on and listen to the other person, the more you make them feel important. If you're meeting someone for the first time, ask what she does professionally and what she enjoys outside of work. Questions can be extremely vague—"bring me up to date..." or about the meaning of a specific statement piece of jewelry. This opens the door for a whole range of topics, and your skills will keep the conversation flowing from there.





## P: Prepare for a Lull

Pauses are natural in conversation, and a brief silence is never quite as long as you think it is! If you sense the person is dying to get away, give him or her the opportunity to leave the conversation gracefully. Otherwise, have a few fail-safe conversation-saving questions in your back pocket. “How do you know the host?” and “What keeps you busy outside of work?” are great options.

Remember that conversation is a skill and an art. Like perfecting a door stack or Greek Week song, you simply cannot improve your conversation skills unless you put effort into practicing. Dare to live in the moment, tuck your smartphone away, and authentically engage with your guest.



## I: Interesting Introductions

Just like during formal recruitment, professional networking requires you to make strong transitions as you introduce your guest to the host, your colleague, or your boss. In addition to names, offer a little information about each person or a shared interest. This will spark a new conversation and enable to you make your exit gracefully.

# Roaring for 100 Years— Alpha Gamma's 100th Anniversary

By ANN PARKER DAVIS  
*Adelphian Chapter Editor*

## The Beginning:

With the help of Jess Rogers from Upsilon chapter, seven young women at the University of Missouri joined together with the express purpose of petitioning Alpha Delta Pi to become a chapter. On April 15, 1915, National Vice President Gladys Tilley Chambers installed Alpha Gamma chapter of Alpha Delta Pi. Charter members were Sadie Woods, Bess Buckridge, Jola Meyers, Willie Lightner, Helen Carter, Marie Brown, and Maxine Wilson.

## Weekend Highlights:

- 300 collegians and 300 alumnae attended the celebration
- The new pin was unveiled on the balcony as a gift from the Alpha Gamma House Corporation
- ADPi Walk for Ronald McDonald House—a 1-mile fun walk around the campus
- House and campus tours
- 50- and 60-Year Ceremonies
- Jewel Degree
- Centennial Celebration Dinner



100th Anniversary co-chairs Melanie Harris Guard, '82 (left), and Susan Kirsch Wintermute, '86 (right), take a minute to pose in front of the chapter house. On the balcony is the new pin that the Alpha Gamma House Corporation bought for the chapter for the 100th Anniversary Celebration.

- Keynote Speakers
- Jan Alexander Maisch, International Vice President of Collegiate Membership
- Dawn Victor-Herring, Alpha Delta Pi Foundation President
- Dr. Cathy Scroggs, Vice Chancellor for Student Affairs
- Terry Gray, Executive Director for Ronald McDonald House Charities of Mid Missouri, recognized Alpha Gamma for meeting their goal of \$50,000 raised.

## Chapter Highlights During the 100th Year:

- Won its first Maxine Blake Golden Lion Award
- Won the 104th Homecoming at Mizzou
- Featured in Alpha Delta Pi's national philanthropy video
- Alana Simpson won the Dorothy Shaw Leadership Award



From left, Susan Wiedmier Bridges, '75, House Corporation Treasurer, and keynote speakers Dawn Victor-Herring, Alpha Delta Pi Foundation President, and Jan Alexander Maisch, International Vice President of Collegiate Membership, are pictured here with new stone lions installed as part of a \$2.7 million addition and renovation completed in 2013.





Alpha Gamma alumnae from the 70s and 80s gather on the front lawn prior to a 1-mile fun walk through the Mizzou campus for Ronald McDonald House Charities of Mid-Missouri. The banner hanging from the balcony shows the 100th Anniversary logo, designed by Mel Brunning, who graduated in 2015.

### Notable Alpha Gamma Sisters

Caralee Strock Stanard served Alpha Delta Pi as Grand President from 1938 to 1948, as NPC Delegate from 1948 to 1959, and as Grand *Adelphian* Editor from 1936 to 1938 and from 1962 to 1980. Her greatest legacy is “The Creed of Alpha Delta Pi,” which was presented as part of her keynote address in 1948.

- Alumna of the Year in 1965—Mabel Ruth Bandy Anheuser
- Vivian Hannan Keltner and Betty McCarty Nicolls served as *Adelphian* Editors.
- Bettie McHaney Talbert, Kristi Baer Cooper, and Peggy Woods Vaughn served for many years as interna-

tional officers. Several other sisters also have served as international officers.

- As undergraduates in the 1930s, Jean Lane and Esther Witt wrote the lyrics and music to Alpha Delta Pi’s “Wishing Wells,” a song that is still sung by chapters.

Alpha Gamma Alumnae Website:  
[www.adpimizzoualumns.com](http://www.adpimizzoualumns.com)

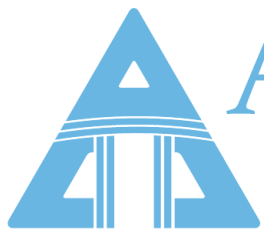


International Vice President of Collegiate Membership Jan Maisch led the 50-year ceremony for Lori Durnell McKinley, Joanne Greaves, and Joan Turner Hickman.



Sisters who participated in the 60-year ceremony include Janet Esau Wheeler, '47; LaDonne Bailey Mullen, '51; Sue Slonecker Davis, '52; Hazel Zurcher Knutsen, '52; and Bettie McHaney Talbert, '53.

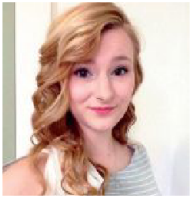




# Alpha Delta Pi Foundation

**Educate  
Lead  
Serve**

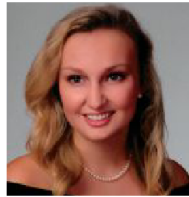
Please join us in  
academic schola  
are leaders on th  
awarded 74 sch  
pride in recogni



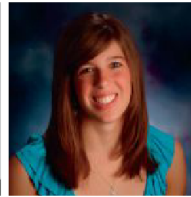
AMY ACHENBACH, TΘ  
Virginia T. Cooney Chapter  
Officer Scholarship



SHELBY ALBERS, BΨ  
Beth Fraley Memorial  
Scholarship



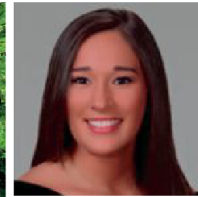
AMANDA ALTGIBBERS, H  
Dorothy Sullivan Jenve  
Scholarship



ALEXA BABIN, Δ  
Catherine Davis Stanley  
Scholarship



SARA DRIEBEL, ΔΠ  
Mary Kelly Shearer Scholarship



NATALIA BARRIGA, ZΓ  
North Carolina Lion's Share  
Scholarship



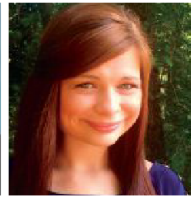
EMILY BLESS, BΞ  
Hoyt-Jolley Foundation  
Scholarship



CHERYL GORDON, BH  
Clara Duncan Smith Memorial Scholarship



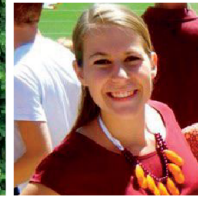
TESSA DILLENBECK, ΔΠ  
Marilyn Mayer Long Chapter  
Officer Scholarship



HANNAH DOSTER, Δ  
Frances Johnson Murrah  
Scholarship



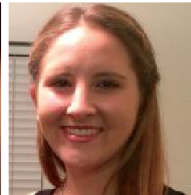
MEGAN ESCHMAN, HΠ  
James H. Hain Scholarship



BIANCA FARMER, ΘE  
Berit Henriksen Carter  
Scholarship



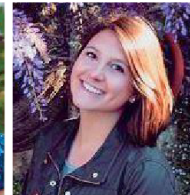
REBECCA GOWER, BΥ  
Virginia T. Cooney  
Undergraduate Scholarship



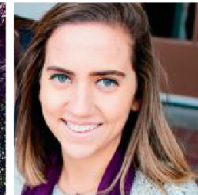
LACEY HARTIN, ZΠ  
Carlotta Dodge Business  
Scholarship



JESSICA HUEBSCHMAN, ZX  
Zeta Chi Chapter Scholarship



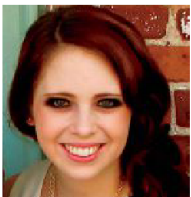
KATHERINE JACOBS, AΠ  
Helen Stoutamyer Lowrey  
Scholarship



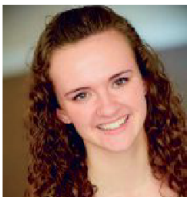
LEAH JIMENEZ, BΥ  
Sharon Southland Long  
Scholarship



SAYRAH JONES, EA  
Virginia T. Cooney Chapter  
Officer Scholarship



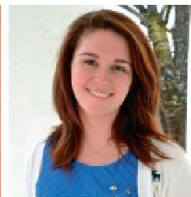
NICOLE KRINSKY, ZΓ  
Lucille Barksdale and Darwin S.  
Renner Memorial Scholarship



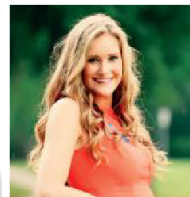
KAYLA LEINWEBER, Υ  
Marjorie M. and Rolf Lauritz  
Steborg Scholarship



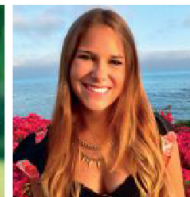
ANNALIESE LEMIEUX-KAPLAN, BΓ  
Maxine U. Blake Journalism  
Scholarship



EMME LONG, ZA  
Virginia T. Cooney  
Undergraduate Scholarship



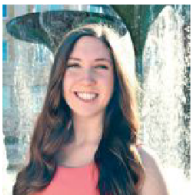
DEVIN MCDANIEL, ΓΓ  
Myrtle McLemore Anderson  
Scholarship



KENNEDY MEEKS, BΞ  
Beta Epsilon Chapter  
Scholarship



ABIGAIL TENNISON, H  
Angela J. Knight Memorial Scholarship



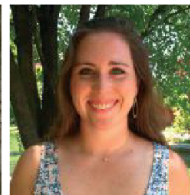
KATIE RETTIG, ΓΧ  
Caralee Strock Stanard  
Scholarship



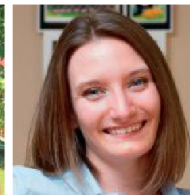
ZOE SCHEVE, Π  
Helen Newton Murray  
Scholarship



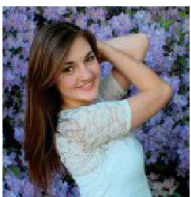
EMILY WALT, Δ  
Anne Veale Pogson Scholarship



MAGGIE SHIFLETT, BΓ  
Gift Mart Business Scholarship



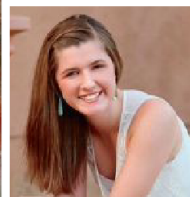
KRISTEN SPARKMAN, Υ  
Marjorie M. and Rolf Lauritz  
Steborg Scholarship



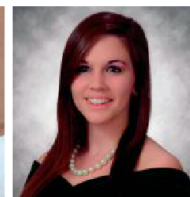
MARY VAN HOLLEBEKE, ΔΘ  
Alpha Theta 75th  
Anniversary Scholarship



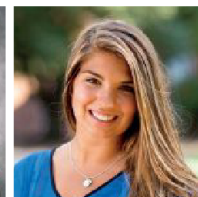
LAUREN WALKER, Π  
Pi Chapter  
Anniversary Scholarship



ERIN WHITEHEAD, ΔΘ  
Alpha Omicron 75th  
Anniversary Scholarship



MADISON WILLIAMS, ZΥ  
Heather Anne Conti Westphal  
Memorial Scholarship



KARLEE WROBLEWSKI, HΘ  
Lucille Barksdale and Darwin S.  
Renner Memorial Scholarship

GRADUATE  
CONTINUITY

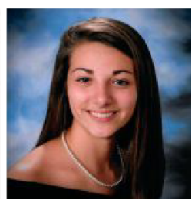


congratulating the sisters listed below on being selected by the Alpha Delta Pi Foundation as recipients of competitive scholarships for the **2015-2016 academic year**. These women exemplify commitment to high academic standards, and they excel on their campuses and in their communities. Through the generosity of sisters and friends of Alpha Delta Pi, the Foundation awards scholarships totalling \$100,950. The Alpha Delta Pi Foundation Board of Trustees, scholarship committee, and staff take pride in recognizing the following sisters. To learn more about each scholarship fund, please visit [www.alphadeltapi.org/Page/Scholarships](http://www.alphadeltapi.org/Page/Scholarships).

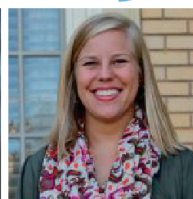
## 2015-2016 SCHOLARSHIP RECIPIENTS



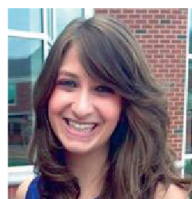
**LISA BORIS, BA**  
Helen G. Snellenburg Memorial Scholarship



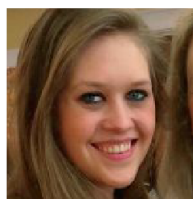
**JILLIAN BUCK, BA**  
Theta Delta Chapter Scholarship



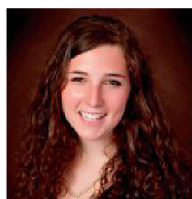
**REBECCA CARPENTIER, ZI**  
Epsilon Pi Chapter Scholarship



**STEPHANIE CONDOLUCI, BA**  
Mary Currier Allen Scholarship



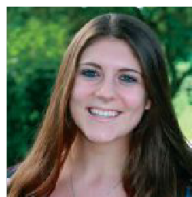
**MALLORY DAMERON, X**  
Eileen Stinnett Riddle Scholarship



**REBECCA DAVIS, FK**  
Ethel Percy Masters' West Virginia Scholarship



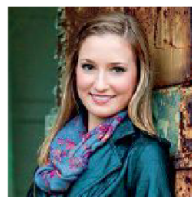
**BARI GOLDMAN, BA**  
Heather R. Kornick and Edith Seitz Owings Memorial Scholarships



**HANA FEINER, FO**  
Helen Newton Murray Scholarship



**JULIANNA FERGUSON, I**  
Iota Chapter Scholarship



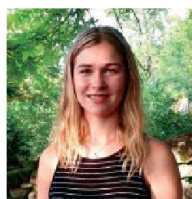
**RILEY FORD, K**  
Kappa Chapter 75th Anniversary Scholarship



**KELSEY GERBEC, BA**  
Heather R. Kornick Scholarship



**SARAH GOETGES, AI**  
Virginia T. Cooney Undergraduate Scholarship



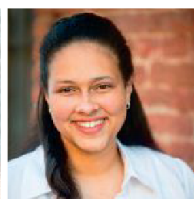
**OLIVIA KECK, AA**  
Delta Alpha Chapter Scholarship



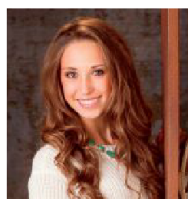
**KRISTEN PETTIGEAN, BA**  
Virginia T. Cooney Undergraduate Scholarship



**JENA KENT, EQ**  
Dodee West Monaca Scholarship



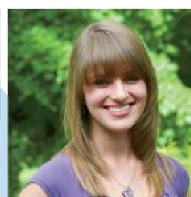
**ALICIA KINGSTON, FH**  
Memphis Area Alumnae Association Scholarship



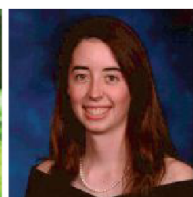
**MADISON KLUMP, BY**  
Virginia T. Cooney Undergraduate Scholarship



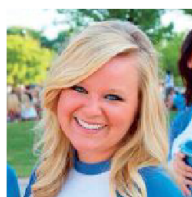
**ERIN MEYER, T**  
Leslie Friend Dalton Scholarship



**JORDAN MILES, AO**  
Missouri State Scholarship



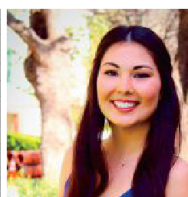
**MADILYN PEAY, AY**  
Virginia T. Cooney Undergraduate Scholarship



**LINDSEY PIERCE, ET**  
Virginia T. Cooney Undergraduate Scholarship



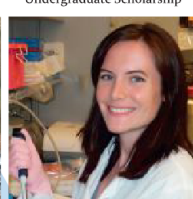
**LANE POQUETTE, H**  
Nanellen Lane Scholarship



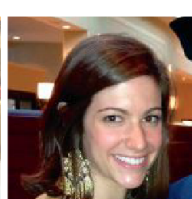
**MICHELLE PRESTHOLT, AV**  
Deena Bartolo Scholarship



**TONYA ADAMS, A**  
150th Anniversary Scholarship



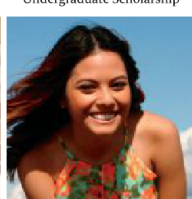
**MADISON BOLGER-MUNRO, BK**  
150th Anniversary Scholarship



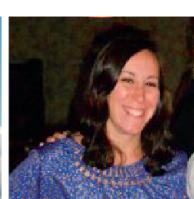
**ALAINA BOYLE, BY**  
Joanna Kristine Howell Scholarship



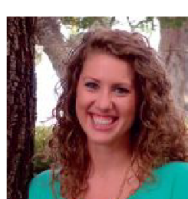
**CRYSTAL CLIMER, AY**  
Gus and Ernestine Medley Memorial Scholarship



**ROJINE DE LAS ALAS, AG**  
Jeanette Virginia Barrows Scholarship



**PARISSA DJANGI, AI**  
Virginia T. Cooney Graduate Scholarship



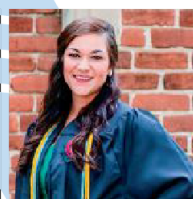
**CHRISTINE IRA, IA**  
Virginia T. Cooney Graduate Scholarship



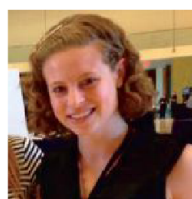
**ALI McDONOUGH, GA**  
Catherine Leslie Iten Scholarship



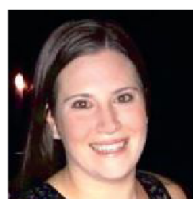
**SHERRA KERBOW ODEN, FY**  
Virginia Rosenberg Stafford Scholarship



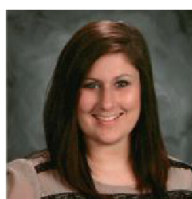
**CATHERINE ORTMANN, BE**  
Ruth Pretty Palmer Scholarship



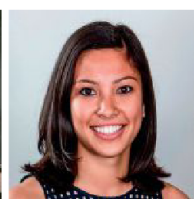
**JENNIFER ROSENTHAL, E**  
Mary Lane Cady Scholarship



**BRENTANA SCHURSKY, EE**  
150th Anniversary Scholarship



**BRANDY SEGRAVES, HI**  
Kathryn M. Strong Scholarship



**JENINA SOTO, P**  
Betty Clapsaddle Riley Scholarship



**MEGAN STROUP TRISTAO, AI**  
Virginia T. Cooney Graduate Scholarship

ALPHA DELTA PI  
SISTERS &  
EDUCATION



# — We — BELIEVE

*Endow ... educate, empower, expand.*

GOAL  
\$10,000,000 by July 2016

To secure the future of our sisterhood and meet needs for generations to come, the Alpha Delta Pi Foundation seeks to raise \$10 million to advance these key initiatives:

## *Adelphian Compass and IMPACT: Leadership Learning*

A multi-faceted enrichment program develops chapter presidents' lifelong leadership skills through a comprehensive curriculum delivered on-site and during immersion training sessions held throughout the year. For emerging leaders, a values-based educational initiative delves into the Creed while enhancing key areas of leadership capacity; a majority of attendees attain higher campus and chapter leadership roles.

## *Leadership Consultants & Special Topics Programming*

Ongoing efforts maximize chapter-based education through visits made by leadership consultants to active chapters, supporting collegians in programming, strategic planning, scholarship, and philanthropy; also, expanded focus on personal development and issues-based modules presented to chapter officers during District Leadership Conferences.

## *The Adelphian Room & Rose Hill Cemetery: Heritage Endowment*

Permanent endowments to preserve the history of Alpha Delta Pi and funding for future expansion of the Memorial Headquarters collections and online archives.

## *Grant and Scholarship Endowments*

We aim to increase capacity of the Clapsed Hands and Abigail Davis Funds — emergency grants for alumnae and collegiate members, chapter scholarships and leadership funds for each of our 156 active collegiate chapters.

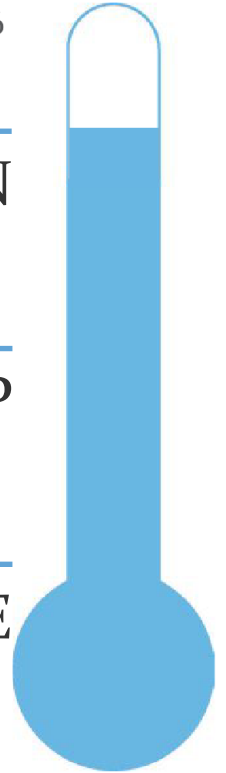
## *Annual Fund: Greatest Need*

Approximately \$5 million of ongoing support to provide for the everyday needs of the Alpha Delta Pi Foundation, providing programming to address members' most pressing and newly emerging issues, offering funding wherever the need is most prevalent.

— in —  
EDUCATION

— in —  
LEADERSHIP

— in —  
SERVICE



*What do You Believe?*

[www.alphadeltapifoundation.org](http://www.alphadeltapifoundation.org)



Alpha Delta Pi  
Foundation

Educate  
Lead  
Serve



# Potential Member Profile

To be completed by members of Alpha Delta Pi only

## Instructions for using this form:

- This form must be endorsed by either an individual or an alumnae association, but need not receive the endorsement of both.
- Collegiate members may only submit Potential Member Profiles for women attending universities other than their own.
- Attach a photo and résumé with this form, if available.
- A personal letter may also be attached, if desired.
- Mail this form directly to the chapter. Do not send to Executive Office.
- If submitting this profile for a Legacy, a Legacy Introduction Form must also be completed and mailed to the chapter.

**Potential Member Profiles may now be completed and submitted through the Alpha Delta Pi website. Click on "Recommend a PNM" at [www.alphadeltapi.org](http://www.alphadeltapi.org)**

For chapter addresses and recruitment dates, please check the Alpha Delta Pi website at <https://www.alphadeltapi.org/Page/PotentialMembersandLegacies>

## POTENTIAL MEMBER INFORMATION

Name (Last, First, Middle, Preferred)

Home Address (Street, City, State, ZIP)

High School Attended

Year Graduated

Previous College/University Attended

PNM's Email Address

Upcoming Year in School

☐ Freshman

☐ Junior

☐ Sophomore

☐ Senior

High School or College GPA (most recent)

ACT Score

SAT Score

## FAMILY INFORMATION

Father's Name

Fraternal Affiliation/College

Mother's Name

Sorority Affiliation/College

Additional Alpha Delta Pi Relatives

Mother (full name, maiden name, college)

Sister (full name, maiden name, college)

Grandmother (full name, maiden name, college)

Stepmother (full name, maiden name, college)

Other (relation, full name, maiden name, college)

Other sorority influences

## POTENTIAL MEMBER ATTITUDE

☐ Friendly

☐ Enthusiastic

☐ Poised

☐ Reserved

☐ Positive

☐ Loyal

☐ Other

## SCHOLARSHIP INFORMATION

- ☐ Honors Student
- ☐ Scholarships Received
- ☐ Academic Awards
- ☐ Field of Study (if known)


## ATTRIBUTES

- ☐ Leadership Positions Held
- ☐ Extracurricular Activities
- ☐ Community Service


## ADDITIONAL COMMENTS

--

## ENDORSEMENT

- ☐ I hereby recommend this woman for membership in Alpha Delta Pi based upon:
  - ☐ My personal acquaintance with her for  years
  - ☐ My personal acquaintance with her family for  years
  - ☐ Information secured from a reliable source
  - ☐ Information secured from local Panhellenic
- ☐ I do not recommend this woman for membership in Alpha Delta Pi

Name

--

Chapter

--

Home Address (Street, City, State, ZIP)

--

E-mail Address

--

I serve Alpha Delta Pi as a(n)

- ☐ Alumna (List Advisor, Int'l Officer, Alumnae Assn, House Corp position)
- ☐ Paid ReMember Dues? (Check if yes)
- ☐ Supported the Alpha Delta Pi Foundation? (Check if yes)
- ☐ Collegian





ALPHA DELTA PI  
*First. Finest. Forever. Since 1851.*

# Legacy Introduction

This form is to be used to introduce legacies to collegiate chapters.

**Alumnae: Please complete the following and mail to the chapter.**

Date

To

Chapter

College/University

This is to notify you that the below mentioned legacy will be participating in recruitment on your campus.  
Also attached is a complete Potential Member Profile to assist you in getting to know her better.  
Thank you for your consideration.

## LEGACY INFORMATION

Name

Relationship

☐ Granddaughter

☐ Daughter

☐ Sister

She will be a

☐ Freshman

☐ Sophomore

☐ Junior

☐ Senior

## ALUMNA (FAMILY) MEMBER INFORMATION

Name

Maiden Name

Chapter and College/University

Initiation Year

Street Address

City/State/ZIP

E-mail Address

☐ I have paid ReMember dues

☐ I have supported the Alpha Delta Pi Foundation

Detail of my alumna involvement (advisor, officer, alumnae association, house corporation, etc.)

☐ I am a current International Officer

☐ I am a former International Officer

☐ I have read and understand the Alpha Delta Pi Legacy Policy. I understand that I will not be contacted if the legacy I am introducing is released during the recruitment process.

Signature of Member

Date

# SPRING

SYMBOLS OF SISTERHOOD

## Style



- A. Pearl Drop Necklace, 18", #682054  
SS...\$49
- B. Pearl Ring, #612013  
SS...\$75 (Whole sizes only, 6 – 9.)
- C. Pearl Drop Earrings, #622054  
SS...\$65
- D. Violet Post Earrings, #0860E  
10K, 10KW...\$129 SS...\$38
- E. Mini Pearl Bracelet, 7", #6315 SS...\$45



- F. Violet Ring, #0684  
SS...\$35 (Whole sizes only, 5– 9.)
- G. Violet Bracelet, 7.5", #0881  
10K, 10KW...\$328 SS...\$176  
GF...\$200
- H. Coles Ring, #7902  
14K, 14KW...\$285 10K, 10KW...\$203  
SS...\$87
- I. Snake Chain, 18", #SNAKE18  
GF...\$30 SS...\$18
- J. Violet Charm, #0860  
10K, 10KW...\$48 SS...\$28
- K. Jewel Blush Watch, #SUMMERTI...\$50
- L. Loyally Festoon Necklace, 18", #206500  
SS...\$35  
(Also available in SS with rose plating.)



**TO ORDER:**  
visit [www.HJGreek.com](http://www.HJGreek.com)  
or call **1-800-422-4348**



*new!*

Loyally Festoon Necklace!

K – karat gold, KW – karat white gold, SS – sterling silver, GF – gold-filled.  
Not all items shown actual size. Prices subject to change.



**HERFF JONES®**  
A Varsity ACHIEVEMENT Brand



# Alpha Zeta Chapter Celebrates 100 Years of Sisterhood

By ANN PARKER DAVIS  
*Adelphean Chapter Editor*

Alpha Delta Pi became the first sorority at Southern Methodist University when Alpha Zeta chapter was installed by National Inspector Su Penn Blind on October 12, 1915—the year that the university opened. On June 12-13, 2015, more than 130 Alpha Zeta alumnae came together at the Holiday Inn Park Cities in Dallas to celebrate 100 years of sisterhood.

A reception, sponsored by Alpha Delta Pi Sorority and the Alpha Delta Pi Foundation, was held for returning alumnae on Friday evening. In addition to the luncheon on Saturday, Alpha Zeta house tours and decade parties were held Saturday afternoon. The Alpha Zeta House Corporation still owns and maintains the Alpha Zeta house as a Panhellenic residence for SMU Greek women in good standing.

The highlight of the weekend was the Centennial Celebration Luncheon held on Saturday, June 13, 2015. Co-chairs of the event were Jan Hancock Wooldridge, who also served as Mistress of Ceremonies, and Anne Veale Pogson. Keynote speakers included SMU Vice President of Student Affairs Dr. Lori White, International President Tammie Pinkston, and past International President Kathryn Peddy Goddard. The 25-, 50-, and 60-year ceremonies were led by Martha Steele, Anne Veale Pogson, and Tammie Pinkston respectively.

Special guests at the luncheon included SMU Vice President of Student Affairs Dr. Lori White, Tammie Pinkston, International Vice President of Finance

Emily Erkel, ADPi Foundation President Dawn Victor-Herring, District V Housing Director Renee Onstot Clark, Rho II Collegiate Province Director Sandy Roland, and ADPi Foundation Executive Director Jennifer Webb.

Alpha Zeta has an impressive record of service at the local, state, and international levels. Several sisters have served as international officers throughout the years,



Centennial Co-Chairs Anne Veale Pogson and Jan Hancock Wooldridge applaud as 60-year members of Alpha Zeta chapter at SMU are honored at Alpha Zeta's 100th Anniversary. 60-year members are from L to R: Patsy Kilpatrick, Peggy Bort Jones, Frances Ragsdale Kerber, and Bety Gosney Mott.

including Carolyn Wiltsie Morton, Martha Steele, and Maureen Calloway Carnavale. Several sisters also have risen to the level of Grand Council and include First Grand Vice President Lilita Wilson McCorkle, Grand Vice President of Collegiate Chapters Lucille Barksdale Renner, Grand Vice President of Alumnae Anne Veale Pogson, Grand Vice President of Collegiate Chapter Performance and Vice President of Collegiate Membership Elisse Jones Freeman, and International Vice President of Collegiate Chapters and International President Kathryn Peddy Goddard. Elisse Freeman and Kathryn Goddard also served as National Panhellenic Delegate. Several sisters also have served the ADPi Foundation, including Peggy Bort Jones, Kathryn Goddard and Anne Pogson, who served as the president.

Alpha Zeta also boasts a number of Dorothy Shaw Leadership winners and Traveling Consultants and was awarded the Golden Lion in 1989. Although the active chapter was closed in 1998, the chapter maintains a presence on the SMU campus with the Alpha Zeta house and with an Interview Room in the Hughes-Trigg Student Center that was donated by Alpha Zetas prior to the 100th.



Alpha Zeta sisters from the late 50s and early 60s gather at the Alpha Zeta chapter house at SMU during the 100th Anniversary Celebration.



Delta Delta sisters at Arkansas show off our open motto during a recruitment photo shoot.

By ANN PARKER DAVIS  
Adelphian Chapter Editor

## ALABAMA

In addition to participating in It's on Us and Living Your Oath, Eta at **Alabama** also held Alpha Delta Pi's Day of Service where sisters volunteered at the Humane Society, Red Shoe Run, Regency Assisted Living, Salvation Army and many more. They also raised \$8,000 for the Birmingham RMHC. Sisters hold several prestigious leadership posts including Panhellenic President, Project Health President, and Capstone.

Beta Omega started the fall semester with Sara Bedsole as a Miss Homecoming candidate at **Auburn**. Philanthropy events for RMHC included Pie-a-Pi and the Take It to the House basketball tournament. Sister Katie Carmichael worked to bring to Auburn the CURE program, a student-led organization that raises money for sick children around the globe. Kasey Rumbarger and Baylee Winn chaired the Auburn Dance Marathon that raised \$238,035.

Zeta Delta celebrated its 45th Anniversary at **Montevallo**. Sisters participated in College Night, the oldest homecoming tradition in the country. The chapter hosted ADPidol for their spring philanthropy along with participating in other chapters' philanthropies. Sisters also volunteered throughout the community as well as at the RMH of Alabama.

Zeta Eta at **North Alabama** had an amazing fall recruitment and reached total. The chapter found many ways to raise awareness and support RMHC by collecting donations and pop tabs for the Day of Change, hosting two philanthropy events and visiting the RMH of Birmingham. Sisters also participated in Step Show and Step Sing that raised money for the United Way of The Shoals as well as the Panhellenic philanthropy, Pumpkin Palooza.

## ARIZONA

Delta Gamma had a great fall recruitment at **Arizona** and welcomed 112 Alphas. The chapter had the best participation on campus in the Reflections body image program that fights stereotypes and body shaming. The chapter won several Panhellenic awards for Living Our Values and their Academic Improvement Initiative. The chapter raised \$10,000 for RMHC with Pi Putt.





It's a day at the beach for the executive board of Zeta Alpha at California State, Fullerton.

Epsilon Xi at **Northern Arizona** had a fun and exciting year. The chapter added two new events to raise awareness and money for RMHC, Flashback Field Day and Build Your Own Burrito. After a strong sisterhood week, the chapter has continued with sisterhood events like Zumba and Game Nights.

## ARKANSAS

Delta Delta welcomed home 165 Alphas on Bid Day at **Arkansas**. Bid Day events included a guest singer and a sisterhood trip to a water park. The chapter is excited to have a 97% new member retention rate. The sisters won 1st place in Step Show, taking home a trophy and a generous donation to RMHC. Sisters continue to be leaders in various organizations, student government, Razorback Athletics, and the community of Fayetteville.

## CALIFORNIA

Alpha Psi at **USC** hosted their annual spring philanthropy, Row Cup, that supports RMHC. Row Cup is a soccer tournament with teams from throughout the campus. Sisters served as coaches and cheered on their teams. Many sisters also are involved in USC Troy Camp, a mentoring and tutoring program for students throughout south Los Angeles.

Zeta Alpha of **California State, Fullerton** started the school year by welcoming many new faces. The chapter hosted Pi Days, a campus fundraiser for RMHC. In addition, sisters participated in other Greek philanthropies, winning six. The



Collegiate and alumnae sisters of Eta Kappa at California State, San Bernardino attend the groundbreaking ceremony for the expansion of the Loma Linda RMH.







The sisters of Theta Omega from California, Riverside support sister Clarissa Carcamo's pizza fundraiser for ΣΑΕ's philanthropy, Children's Miracle Network.

chapter also participated in Greek Week, which raised money for the school philanthropy, Camp Titan, a summer camp for underprivileged children.

The sisters of Zeta Pi at **San Diego** hosted a successful fall philanthropy, the Run for Ronald 5K. The chapter raised \$5,000. They welcomed 30 Alphas after their spring formal recruitment and enjoyed a baseball-themed Bid Day.

Eta Kappa welcomed 35 Alphas after a successful fall recruitment at **California State, San Bernardino**. Sisters were involved with the Loma Linda RMH by cooking dinner for families, volunteering at the groundbreaking expansion, and hosting a game and craft booth at the RMH Winter Wonderland event. Sisterhood events included a safari-themed chapter retreat, cheering on the basketball team, ice skating, and hosting COR events.

Theta Pi of **Santa Clara** Panhellenic celebrated their third anniversary. The chapter is very proud of the awards that they received at DLC including three excellence awards. The chapter had the highest GPA for all NPC groups. Sisters held their Lion's Share Auction and raised over \$25,000 for RMHC.

As a new chapter, Theta Omega at **California, Riverside** has elected its second set of officers. The chapter joined ΓΦΒ in a joint philanthropy to benefit RMHC and Building Strong Girls. Together they collected personal care products and donated a truck full of supplies to the Loma Linda RMH. The chapter also held a fundraiser for Children's Miracle Network and held their first semi-formal at the Sea Cliff Country Club.

## CONNECTICUT

During the fall semester, Eta Omicron at **Western Connecticut** welcomed Alphas during open recruitment. Sisters were involved with other Greeks in several events including LemonADPi, where they sold lemonade and cookies, their Murder Mystery event, and their Ugly Christmas Sweater party. Over winter break, several sisters traveled to London and Dublin.



Eta Omicron sisters from Western Connecticut enjoy a trip to London and Dublin over winter break.

## DISTRICT OF COLUMBIA

Using the hashtags #ADPride and ADPower, Alpha Pi at **George Washington** renewed their efforts to foster sisterhood, sorority, philanthropy, and scholarship. Their #ADPower was at a peak when the chapter raised \$11,275 for RMHC during Diamond Heist. The chapter is #ADProud to have welcomed 54 Alphas and have three sisters inducted into Order of Omega. Sisters also hold campus leadership positions, including President of the Student Association, Undergraduate Senators, and Panhellenic President.



## FLORIDA

Iota chapter at **Florida State** welcomed 90 Alphas with a sisterhood retreat at Universal Studios in Orlando. The chapter raised more than \$20,000 for the RMHC and the ALS Foundation with Homers and Hogs. The chapter took 1st place at Cheers for Children benefiting the Kidz 1st Fund and placed 2nd in the FSU homecoming float competition.

Gamma Gamma at **Florida Southern** raised over \$1,300 for their philanthropies during the fall semester. During the spring semester, the chapter held their second Bowling for Ronald event. With several sisters on the President's and Dean's lists, the chapter had an overall GPA of 3.42. Sisters have been elected to Panhellenic offices and SGA.

During the spring semester, Gamma Delta at **Miami** held their Tugs for Tots for RMHC and participated in the Dolphins Cancer Challenge for the Sylvester Comprehensive Cancer Center. Sisters hold a number of leadership positions including Panhellenic President. Spring also brought a successful recruitment and Bid Day, as well as Diamond Sister Reveal and the Chapter Retreat at the Wynwood Art District.

Gamma Iota chapter President Noelle Spencer was one of 20 students out of 50,000 invited to attend the Orange and Blue Gala to celebrate the inauguration of the **12th University of Florida** president, Dr. W. Kent Fuchs. Said Noelle, "My favorite part was being in the room with past university presidents and involved alumni who are all so proud to be Gators. It really put everything into perspective and motivated me to continue to do more on campus."

During the fall semester, Epsilon Lambda at **South Florida** welcomed 59 Alphas and took home 1st place in Delta Gamma's Anchor Splash that raises money for Service for Sight. Spring semester brought Zeta Tau Alpha's Step Competition for breast cancer awareness as well as the chapter's successful Cheer Toss event for RMHC.

A major event for the sisters of Zeta Epsilon at **West Florida** was their local RMH Christmas Party. Sisters worked closely with the RMH to coordinate an extravagant dessert buffet, a build your own hot chocolate booth, and Santa's arrival with everyone's favorite Minions. Giving the families a Christmas party allowed them to celebrate the holidays even though they could not be in their own homes.

Zeta Omega chapter was proud to support sister Ashley Thurman as she competed in the **University of Central Florida** Scholarship Pageant where she placed third and received a \$900 scholarship. Her platform issue was "Victory Against the Silent Fight" for suicide prevention and the promotion of self-value. Ashley also has been active in the chapter serving as the Leadership Chair and on campus as the Chair of Greeks Against Human Trafficking.



Alpha Pi sisters Kathleen Lockhart, Taylor Miller, and Lindsay Goodman demonstrate their commitment to excellence as they are inducted into Order of Omega at George Washington.



These sisters from Gamma Gamma from Florida Southern are all smiles as they pose for a picture.





Gamma Delta sisters at Miami join sisters from ΛΔΔ for a fun Halloween event.

After a successful recruitment at **Florida Atlantic**, Theta Kappa welcomed 71 Alphas and held their candle passing Diamond Sister reveal on the beach. The chapter won homecoming for the second year in a row and raised the most money for Owlthon, the campus Dance Marathon. The chapter also had the highest GPA, and sister Allyson Miller was awarded the Dorothy Shaw Leadership Award. Spring brought the 2nd Annual Volleyball Mane Man competition for RMHC.

## GEORGIA

Lambda sisters at **Brenau** started their busy fall semester holding their Pie-a-Pi philanthropy during Parents' Weekend. Several sisters went to Atlanta for the Tee Off for Ronald Golf Tournament. The chapter held their Mallard Ball at Stone Mountain and opened their house to Brenau faculty and students for the annual Christmas Social. Sisters are involved with May Court, Greek Council, HTH Senior Honor Society, Women in Technology, and Servant Leaders.

Beta Nu at **Georgia** held two successful philanthropy events for RMHC—their Teeter Totter Dinner in the fall and their Pop, Top, and Drop It concert series in the spring. The chapter also partnered with other nearby chapters to host their annual Golf Tournament benefiting RMHC. Sisters serve on a number of campus philanthropy executive boards. Sisters made Christmas cards for the RMH and for the Marine platoon of a sister's brother. Katie Haack was elected Vice President of Finance for Panhellenic.

Beta Sigma's reputation for being active and involved was showcased during homecoming at **Mercer**. The chapter participated in a number of events and won Lip Sync. Senior Kait Harvey hosted Mercer's Got Talent, which raised \$4,000 for the Fuller Center for Housing, and Valerie Davis won first place with her piano performance.

Delta Alpha was pleased to have former International President Tammie Pinkston speak at **Emory's** Women Empowerment Week. The chapter also worked with other Georgia chapters to raise over \$100,000 for the new Peachtree Dunwoody RMH. The chapter is very proud of Gurbani Singh, who was named an Emerging Leader at DLC. The chapter welcomed 47 Alphas with a fun-filled candy-themed Bid Day.

It was 1st Place all the way for Epsilon Pi during homecoming at **Georgia Southern**. The chapter won first place in GSU



Zeta Epsilon sisters find out about other organizations on the West Florida campus during Blizzard Bash.





Beta Sigma sisters from Mercer visit Eugenia Tucker Fitzgerald's grave during Diamond Days.



Delta Alpha sisters show off their love of Pi during the homecoming parade at Emory.

Idol and the Doo-Dah dance competition. Hard work and campaigning throughout the campus paid off when Kayla Wilkinson was crowned Homecoming Queen by sister Megan Johnson, Miss Georgia Southern University.

Zeta Zeta chapter at **Augusta University** raised \$3,600 for the RMHC of Augusta with a Preppy Olympics during their Lion's Share Challenge. Sisters continue to cook monthly dinners for the families at the RMH. Sisters also are involved in community endeavors including the Prom Project for underprivileged girls and the Jaguar Miracle that organizes events to support the local children's hospital.

Zeta Iota at **Georgia College and State University** held their annual picnic to raise money for RMHC. Sisters traveled to Macon to cook dinners for the families at the RMH. During Diamond Days, sisters celebrated Blue and White Day with dinner and dessert.

Zeta Omicron at **Georgia Tech** joined other Georgia chapters for the annual Tee Off for Ronald Golf Tournament to raise money for RMHC. The chapter continued to host game nights for kids at the RMH. Football was a common theme as members got together to support the Georgia Tech football team as well as sisters who won the flag football championship. Sisters also supported Tech the Halls, which helps underprivileged children enjoy Christmas.

Throughout the fall, Theta Upsilon at **Shorter** continued to cultivate their young sisterhood with a Christmas party, Greek mixers, and officer transitions. Spring semester brought a COR event that highlighted RMHC and had the theme, How Sweet It Is to Be an ADPi.

## ILLINOIS

Sigma chapter at **Illinois** started the school year with a sisterhood event prior to recruitment that focused on members getting to know each other by sharing stories in small groups. The sisters hosted a chili dinner that raised \$3,145 for RMHC. The chapter, along with Sigma Alpha Epsilon, held a Live Your Oath event with three Sigma sisters leading the discussion.

Zeta Theta welcomed 64 Alphas after fall recruitment at **Illinois State**. The chapter also teamed with ΣAE to host Backyard Baggo, where Greeks ate burgers and played baggo with the proceeds going to the RMHC and the Children's Miracle Network Hospitals. Spring brought the Luck of the ADPIrish, a fun date auction philanthropy with the proceeds also going to RMHC.

## IOWA

With continued chapter growth, Theta Eta has worked hard to foster success on the **Drake** campus and within the community. Sisters enjoyed a New Year's in November sisterhood event and introduced their Nacho Average Philanthropy. The chapter also is excited to be in the process of building their future chapter house.

## KANSAS

Tau chapter at **Kansas** started the school year by participating in GI Theta Chi benefiting The Wounded Warrior Project and the Alpha Gamma Delta Step Up Challenge, raising money for RMHC. The chapter hosted the Color the Campus 5K and raised \$3,718 for RMHC. Partnering with Alpha Tau Omega for homecoming,



Sisters of Zeta Zeta at Augusta are all smiles after taking a sisterhood trip to an Atlanta Braves game and watching them win.

the chapter was awarded second place for their float. The chapter also participated in the Rock Chalk Revue.

Alpha Eta changed its focus for homecoming at **Kansas State** and decided that rather than spending endless amounts of time and money on the float, the chapter would make a simple float out of recycled materials. Sisters spent their time volunteering at the Salvation Army and Boys and Girls Club and making cookies for soldiers at Fort Riley. The chapter received many positive responses and is excited to see how this change will impact the future of the KSU community.

## KENTUCKY

Beta Psi had a very successful fall semester. The chapter welcomed 97 Alphas, enjoyed their Mallard Ball, won **Kentucky's** Wildcat Cup, was named the most active sorority during homecoming, and saw sister Lauren Henrickson crowned Homecoming Queen. The chapter hosted The Mane Event again and raised \$74,925 for the RMHC. Spring brought the Color Me Rad 5K. The chapter also won five Panhellenic Highest GPA awards.

Epsilon Delta at **Western Kentucky** started the year with their Chapter Retreat—setting goals, bonding, and getting to know the Alphas. The chapter held their annual philanthropy, Run for Ronald 5K, and raised \$10,000. The most exciting event of the semester was the chapter's 50th Anniversary celebration held in October at the Bowling Green Country Club. Chapter members and alumnae enjoyed an evening of food, live music, dancing, reminiscing, and singing songs of old and new.

Fall at **Murray State** saw Epsilon Omicron winning Greek philanthropies along with hosting a very successful one of their own. Changing their fall philanthropy, the chapter hosted Kickin' It with ADPi and raised \$3,000 for the Albuquerque, New Mexico, RMHC. During the spring semester, sisters were initiated into Order of Omega and chosen as summer orientation counselors and Student Ambassadors.

Eta Omega at **Centre College** raised \$2,565 for RMHC with Piasta, their walking nacho bar, and Late Night Dodgeball with ΣAE. Sisters have enjoyed social events like pumpkin picking, a casino night mixer, and Winter Wonderland for potential new members. Non-affiliated women have been able to enjoy fun events such as tie-dyeing t-shirts at ADPi Dye, making labels for pop tab jars, and having waffles and berries at the Pijama party.

## LOUISIANA

Epsilon chapter at **Tulane** was excited to win their first Diamond 4-Point after re-colonization along with other awards at Grand Convention. During the fall semester, the chapter hosted other Greek houses for a fun afternoon with their new Lion's Share Challenge, Bounce for the House for RMHC. The chapters also joined other Greeks in hosting a 5K with proceeds going to the St. Bernard Project, which helps people affected by disasters like Hurricane Katrina.

Delta Eta at **McNeese State** had a huge growth spurt as they doubled their chapter size with their fall Alpha class and is now 105 members strong. Spring semester brought planning, preparing for, and hosting their first



Kicking It with ADPi kickball tournament to support RMHC. Along with doubling the size of the chapter, sisters have doubled their goal of philanthropy hours for the semester.

Theta Phi at **Louisiana, Lafayette** had a semester of firsts—participating in their first formal recruitment, hosting their first philanthropy, and positively impacting their campus. Sisters have spent their weekends with socials, sisterhood activities, service events, and RMH visits. The chapter won improvement awards and the Most Dollars Raised for RMHC award at DLC.

## MASSACHUSETTS

Rho chapter at **Boston** raised \$9,500 for RMHC with their Friday Night Lights philanthropy. Several companies joined the event, and teams of eight competed in flag football games. Several sisterhood events were held, including kayaking on the Charles River and pumpkin and apple picking at an area farm. Madeline Brady ran for ADPi in Chicago and raised \$1,000 for RMHC. Sisters supported Kristen Cabrera who ran in the BAA half marathon in Boston. Members also supported several other Greek philanthropies.



Sigma sister Anna Kazuba hosts an “It’s On Us” rally on the Illinois campus and has the opportunity to meet Vice President Joe Biden.



The sisters of Zeta Theta pose for their annual diamond picture for formal recruitment at Illinois State.





Epsilon Delta celebrates 50 years of sisterhood at Western Kentucky with a weekend of fun and festivities.

## MICHIGAN

Sisters of Beta Eta at **Michigan** hosted a Military Education and Appreciation Event as a TME activity. Representatives of all branches of the Armed Forces spoke about military life and ROTC to the chapter and community members. ADPi was honored to receive a Captain's Coin from the Commanding Officer of the Army ROTC. Spring semester brought the goal of working with the Panhellenic Council toward creating greater unity among the four Greek Councils by having joint professional and philanthropic events.

Zeta Upsilon welcomed 32 Alphas on Bid Day at **Oakland** and added four others during COR. During OU's Day of Service, sisters worked in Detroit and enjoyed bonding while helping others in need. Other activities included their retreat, Diamond Days, and the much-anticipated semi-formal that brings an end to the fall semester. The chapter was honored to meet and welcome International President Stacy Bruton into their home.

## MISSISSIPPI

The highlight of the year for Delta Sigma at **Ole Miss** was the opening of their beautiful new chapter house. Other activities included raising money for RMHC with the Mane Man pageant and Pi-a-Pie. Sisters enjoyed participating in Kappa Alpha Theta's philanthropy dance competition, Theta Encore, and had a blast learning dance moves with each other.

The sisters of Epsilon Eta at **Mississippi State** worked to increase sisterhood with events like Christmas Clue, themed dinners, and talents shows and were rewarded with a 95% retention rate for their 2015 Alpha class. Philanthropy events for RMHC included Pretzel Late Night and Diamond & Dives Volleyball Tournament. Sisters



Epsilon sisters at Tulane enjoy the Lion's Share Challenge!

have participated in several Greek philanthropies and have worked to make Trick-or-Treat on the Row a success. The chapter also won the Ritter Award for Most Improved GPA.

Eta Zeta at **Southern Mississippi** was very excited to support their Golden Eagle football team for their first post-season appearance in four years at the Zaxby's Heart of Dallas Bowl Game. Nine sisters are involved in the Pride, which consists of the marching band, color guard, and Dixie Darlings dance team.

## MISSOURI

During the fall semester, Gamma Mu at **Missouri State** hosted their 3rd Annual Pi-Hop pancake breakfast and raise \$4,060 for RMHC of the Ozarks. The chapter also completed over 3,300 hours of community service and won





A few members of the spring 2015 class of Rho at Boston show their ADPi pride!

the highest chapter GPA award. Shelby Greninger was elected homecoming queen. Two sisters started an organization called "I'm First," to provide a support system for first generation college students.

Delta Nu welcomed 35 Alphas on Bid Day at **Southeast Missouri State**. Fall activities included a sisterhood event at a roller-skating rink and decorating the homecoming float. Sisters held their big philanthropy, Kickin' It with ADPi soccer tournament, and supported other Greek philanthropies, winning the  $\Phi\Delta\Theta$  and  $\Sigma\Sigma\Sigma$  events. The chapter won several Panhellenic awards including Sorority, President, Advisor, Unsung Heroine, and Woman of the Year.

After taking home their third Golden Lion at Grand Convention, Delta Phi at **Missouri, Kansas City** got busy on their philanthropic work. Events to raise money for RMHC included their LemonADPi Stand in September, a pop tab drive in October, and their annual PiHop pancake event in March. These efforts raised \$2,706 for RMHC. Sisters also support several other Greek philanthropies. The chapter retained their "First in Grades" title for the highest Panhellenic GPA.

After returning from winter break, sisters from Eta Nu at **St. Louis** bundled up and enjoyed an ice skating sisterhood, warming up with hot chocolate afterward. January also brought the chapter's King of Diamonds Philanthropy Week. Activities included profit shares at local restaurants, a bake sale, selling pancakes in the resident halls, and the Rockin' for Ronald fraternity dance competition.  $\Delta\Delta\Gamma$  won and the chapter raised \$2,667 for RMHC.

### NEW YORK

Sisters from Gamma Pi at **Wagner** visited Beta Phi chapter to add their support during recruitment. It was fun for the Gamma Pi sisters to be able to stay in the chapter house and experience how chapters with a house live. Some of the sisters who went had not been through a formal recruitment as a Delta member, so it was good for them to experience it before their own recruitment. The sisters were so happy to have been given the opportunity to meet and work with the sisters of Beta Phi.

### NORTH CAROLINA

Omicron started their spring semester by welcoming 33 Alphas on Bid Day at **Duke**. Sisters celebrated with a full day of bonding with Bid Day pictures, an ice cream social, a Galentine's donut and a Rom-com brunch. The Diamond Sister Reveal was celebrated with a



Colleen Harrison of Beta Eta at Michigan poses with presidential candidate Hillary Clinton. Colleen was a student volunteer for the campaign in both Iowa and New Hampshire.



Wacky Tacky-themed roller skating party at a local rink. April brought another successful waffle breakfast to raise money for RMHC.

Beta Iota at **Queens** had a fantastic fall and initiated twelve enthusiastic new Deltas. Around Halloween, sisters participated in the Red Shoe Campaign, placing bags and boxes with a wish list of supplies for the Charlotte RMH at homes throughout their neighborhood. They collected nearly \$2,000 in supplies and donated five pounds of pop tabs. The lodge has been redesigned, and the sisters are proud to show it off.

Beta Upsilon at **North Carolina, Chapel Hill** has had a great year. The chapter hosted several successful philanthropies, including their annual Ron-a-Thon 5K and Waffle Night for RMHC. Throughout the year, the chapter raised \$14,820 for RMHC. Sisters welcomed 55 Alphas with a Mardi Gras-themed Bid Day and enjoyed their sisterhood retreat at the Carolina Outdoor Center. The chapter also earned a 3.42 GPA, beating the Panhellenic GPA of 3.38.

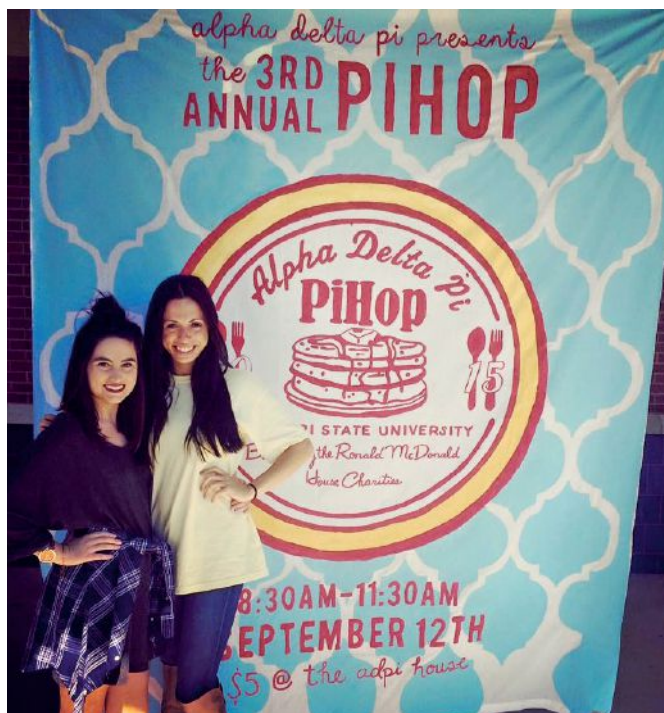
The sisters of Delta Omicron kicked off the school year at **East Carolina** as they held their 23rd annual Pie-a-Pi fundraiser and raised \$4,000 for the RMHC. The chapter enjoyed getting to know each other at their sisterhood retreat at Atlantic Beach. The chapter hosted a pasta dinner to reach out to other Greeks and held a week of kindness during spring finals, handing out gifts and snacks and encouraging students.

Zeta Beta welcomed home 54 Alphas at **North Carolina State**. Fall brought the 5th Annual Ram Roast for RMHC, and spring brought the Hot Cakes for Kids philanthropy at a local McDonalds. Members also volunteered at the RMH, cooking dinners, baking desserts, and hosting fun activity nights. The sisters also enjoyed spending time together at sporting events, sisterhood activities, and chapter dinners. The chapter also had the highest Panhellenic GPA for the second semester in a row.

Zeta Gamma at **North Carolina, Charlotte** raised \$13,000 at their annual Boot Scootin' Barbecue for RMHC. The chapter won \$1,000 participating in an endowment campaign and selling donuts. The chapter also helped out other Panhellenic organizations with Rent-a-Puppy benefiting the Circle of Sisterhood Philanthropy. Nine sisters were inducted into the Order of Omega, and the chapter had the highest Panhellenic GPA.



Delta Nu welcomes 35 Alphas on Bid Day at Southeast Missouri State.



Gamma Mu at Missouri State raises \$4,059 for RMHC with their Pi-Hop pancake breakfast.

Zeta Psi had one of their largest Bid Days at **North Carolina, Greensboro**. The chapter welcomed alumnae to homecoming with the theme Par-tea with ADPi. The chapter raised \$250 for the Winston Salem RMH with Pie-an-ADPi. The chapter received the highest GPA for the second semester in a row. The chapter also celebrated its 35th Anniversary and held its Silent Auction in April.

Eta Alpha at **North Carolina, Wilmington** held their Low Country Boil at Wrightsville Beach, and it was a huge success. Spring brought the Dunk-a-Pi philanthropy. The chapter supported other Greek philanthropies and volunteered at elementary schools. The chapter also participated in the Panhellenic Anti-Hazing week.



During recruitment, Eta Upsilon got philanthropic at a garden party, danced under the circus big top, showed what it means to live for each other at Preference, and welcomed 54 wonderful Alphas on Bid Day at **Wake Forest**. The chapter hosted its 4th Annual Gala for Giving and raised \$22,000. Wearing #TeamErin bracelets in memory of sister Erin Levitas, who passed away from sarcoma, the chapter took part in Hit the Bricks to raise money and awareness for the Brian Piccolo Cancer Research Foundation.



Delta Omicron sisters from East Carolina enjoy their Chapter Retreat at Atlantic Beach.

The sisters of Theta Epsilon held their second Mr. Cutie Pi Pageant at **Methodist**. Contestants competed in formal wear, talent and interviews. The top three contestants were awarded gift cards and goodie bags. A young girl who had stayed at the local RMH was the special guest along with Mr. Cutie Pi 2014. In addition to collecting pop tabs, the chapter raised \$300 for RMHC.

## OHIO

The sisters of Xi chapter at **Ohio** hosted their fourth annual Mr. University pageant with 11 contestants representing various student organizations competing for the title. Contestants were judged in a series of categories such as formal wear, swimwear, talent, and interview. The event raised \$4,500 for RMHC of Central Ohio. The chapter also made several trips to the RMH to assist with cleaning, baking, and preparing for different holidays.

Chi chapter had an excellent recruitment at **Wittenberg** and reached quota when they welcomed 21 Alphas, making Chi the largest sorority on campus. Philanthropic activities included monthly trips to the Dayton RMH as well as hosting their Lion's Share Challenge, Fall Fiesta. The chapter raised \$2,500 for RMHC and the ADPi Foundation. Sisters hold leadership positions in many organizations such as Union Board, Panhellenic Council, and numerous honor societies.

Epsilon Nu organized an RMH Awareness Week to educate the **Ashland** community about the charity with



Sisters from Eta Alpha at North Carolina, Wilmington serve food to the sisters of AXΩ at their Low Country Boil philanthropy.

a dating game show, interactive social media discussions, collecting donations of food and household goods, and providing free soda to collect pop tabs. The chapter also raised \$1,571 for RMHC with their 4th Annual Ron-a-Thon. The chapter made weekly visits to the Cleveland RMH, enjoyed sisterhood events, participated in other philanthropies, and had the highest Greek and new member GPA.

In the fall semester, Eta Epsilon at **Miami** logged 1,655 volunteer hours and raised \$2,022 through RMH Month and Dad's Weekend. During RMH Month, the chapter held a pop tab drive,







The sisters of Chi at Wittenberg present their 21 new Alphas.

sold pancakes, and hosted a soccer tournament, Kick It for Kids. The chapter partnered with Women in Business and Teach for America to sponsor Laura Smith, the 2013 Eta Epsilon President, who spoke about her career with  $\Theta\Phi\Lambda$  and how her leadership in ADPi and her business degree prepared her for success.

## OKLAHOMA

Alpha Omicron at **Oklahoma State** raised \$4,030 with two fun events. They held their second Pi-Athalon, a competition where fraternities participated with various fun and messy relays with pies and other sweets. The chapter also held a Pi-Zookie night at the chapter house. The chapter made pizookies, warm cookies that they topped with ice cream, and served them to those who came to visit the chapter and support the RMH.

Theta Xi at **Central Oklahoma** was proud to have a sister receive the Dorothy Shaw Award and another the Emerging Leader Award at DLC. The chapter hosted a COR event and welcomed six new sisters while enjoying hot cocoa and playing games. The chapter also held their philanthropy, Just for Kicks, and raised \$600 for RMHC.



Eta Epsilon at Miami hosts "Kick It for Kids" to raise money during RMH Month.





Theta Xi at Central Oklahoma hosts a COR event—Hot Cocoa with the ADPi sisters.

## PENNSYLVANIA

The members of Delta Kappa at **Penn State** welcomed 71 Alphas into their sisterhood. The chapter continued to fundraise for THON, the largest student-run dance marathon that raises money for pediatric cancer research. Several seniors danced for 46 hours. Sisters participated in the MLK Day of Service by volunteering in the community. They also raised \$1,800 for RMHC with the Ball-der-Dash dodgeball tournament and are geared up for their campus-wide wing-eating contest.

Delta Rho at **Gettysburg** held their fall retreat at the RMH of Hershey, where they donated much needed items while building greater bonds in the chapter. They held their first Tug-of-Roar, raising \$480 for RMHC. The chapter participated in other Greek philanthropies, winning Delta Gamma's. Delta Rho became the first chapter to win the Gettysburg Great Award for outstanding performance in all aspects of Greek life, from academics to community service and organization. The chapter also has the highest GPA on campus.

The sisters of Eta Beta at **Allegheny** had an exciting semester. They welcomed their new Alphas in their newly decorated suite. The chapter raised \$370 for RMHC with their Pizza Pies with ADPi. Sisters supported Carly Wisner in the Miss Butler County Scholarship Pageant.

Sisters of Eta Lambda at **Albright** rocked for 72 hours during Rock-a-Thon and volunteered countless hours at both the Philadelphia and Hershey Ronald McDonald Houses. Melissa Zillhardt was accepted into law school and Kayle Smith into medical school. Four sisters studied together in Hawaii, and President Erin Sullivan conducted research through ACRE, studying non-profit organizations.

On Bid Day at **Bucknell**, Theta Iota welcomed 45 new Alphas. The chapter raised over \$700 at their ADPiHop for RMHC and prepared meals for the Danville RMH. Sisters joined the brothers of TKE to sponsor



Delta Rho sisters from Gettysburg visit the RMH in Hershey, Pennsylvania, to make cookies and help clean.





the Stars, Stripes, and Spikes volleyball tournament to raise money for RMHC and St. Jude Children's Research Hospital. The chapter also participated in Panhellenic and IFC's Spooktacular.

Theta Sigma has had an amazing year and initiated 36 new sisters, their second Alpha class at **West Chester**. In the fall, the chapter hosted Pop Tab Wars and collected thousands of pop tabs, and in the spring, they held their second Lion's Share Challenge where sororities and fraternities competed in a Quizzo-type competition and donated loads of pop tabs. Michaela Quigley was named Outstanding Chapter President, and the chapter achieved the highest GPA for the second semester.

Theta Tau at **Penn** had a successful Lion's Share Challenge benefiting RMHC with its second Pie-a-President. In addition to throwing pies at campus leaders, the chapter sold slices of pies and pizza and raised \$1,870 for RMHC. Following winter break, the chapters participated in their second formal recruitment and celebrated their new Alphas with a *Grease*-themed Bid Day.



Theta Tau welcomes home new Alphas on Bid Day at Penn with signs and balloons.

## SOUTH CAROLINA

After winning the Golden Lion at Grand Convention, Beta Epsilon at **South Carolina** had a very successful fall. The chapter earned the highest GPA among all Greeks. They held their 4th Annual Taste of Columbia philanthropy and raised \$20,000 for the Columbia RMH. Sisters contributed to RMHC by making goodie bags for the kids, visiting with families, and cleaning the RMH. The chapter participated in a workshop on sexual assault and misconduct led by former International President Tammie Pinkston.

Zeta Nu at **Clemson** welcomed 64 Alphas with an Out of this World-themed Bid Day. The chapter held their 3rd Annual Pi Run with Eta Phi and raised \$5,000 for RMHC. Sisters are involved in a number of activities,

including SGA, cheerleading, Rally Cats, and Order of Omega. Sister Rachel Wyatt was crowned Miss Clemson and will compete for Miss South Carolina. The chapter received the highest GPA of all Panhellenic chapters. Zeta Nu's biggest accomplishment was winning Golden Lion at Grand Convention.

With the theme All American Girl, Zeta Sigma welcomed 55 Alphas on Bid Day at the **College of Charleston** and enjoyed a day at Trophy Lakes. During the fall, sisters raised \$800 and logged 200 hours for the Charleston RMH. Zeta Sigma placed 1st at the Greek Life Pep Supper, as the chapter and local alumnae raised \$10,000 for the Low Country Food Bank. After fun and successful COR events in January, 15 Alphas were welcomed with "Fresh Since 1851," a 90s themed Bid Day. Sisters were selected as Student Alumni Associates, Alumni Scholars, and a Schottland Scholar.

On Bid Day in January, 20 new Alphas excitedly ran home to Zeta Tau at **Winthrop**. The sisters held their first Pi Week with daily events including a social media challenge, pop tab guessing jar, and a cornhole tournament and raised \$1,438 for RMHC. The chapter has



Zeta Nu sisters Nicki Ward and Regan Adams smile for a picture before walking in the First Friday parade celebrating Clemson's finest organizations and kicking off the football season.





Zeta Tau sisters are ready for their cornhole tournament at Winthrop.

established a memorial scholarship fund in memory of sister Anna Hurst and other Zeta Tau sisters who have passed away. Their goal is to provide \$1,000 annually to a sister in need. Abigail Roush received the Ruth Pretty Palmer Award at DLC.

Eta Xi at **Presbyterian** won several awards at DLC, including highest GPA on campus. Seniors were highlighted throughout the spring semester on #seniorspotlight on the chapter's social media sites. The chapter held their Hoops for Hearts for RMHC at a Presbyterian basketball game. Other events included mixers, workshops, funshops, Bible studies, and filming the marketing video.

Eta Phi at **Furman** hosted Fall Fest, three days of activities that included a bake sale, canned food drive, and Pie-a-Pi to raise money for RMHC. The chapter co-hosted the Pi Run for Ronald with Clemson, and five sisters ran the Chicago Marathon as part of Team RMHC. Both events offered the opportunity for chapter members to celebrate sisterhood and philanthropy with sisters from other chapters. Eta Phi welcomed 32 new Alphas after spring recruitment.

Theta Beta at **Coastal Carolina** was awarded the Golden Lion at Grand Convention. The chapter welcomed 52 Alphas after fall recruitment. Homecoming week saw Shelby Dangerfield named Miss CCU and Kelsey Miller named Homecoming Queen. The chapter earned the highest Panhellenic GPA and won five awards at DLC, including Highest GPA. Carson Kilpatrick won the Emerging Leader Award, one of three in District I.

Theta Chi celebrated its first anniversary at **Charleston Southern** on December 5th with a birthday party. The chapter welcomed 16 new Alphas after fall recruitment. Sisters held a card making station for students to create cards for children at the RMH. Theta Chi handed out juice and doughnuts to thank students and faculty for all they have done for the new chapter. Sisters also participated in a 5K Color Run on campus.

## TENNESSEE

Alpha Kappa held its annual tailgate at **Tennessee, Knoxville** to benefit RMHC with family, friends, and yummy food. It was held the same weekend as a chapter alumnae celebration, and sisters from the 1980s and 1990s helped the chapter raise \$11,000. The chapter also held their Hoops for the House basketball tournament in



Eta Phi sisters pose before formal recruitment at Furman.



April. The chapter is paired with AOP and is excited to compete in Carnicus. The chapter also is prepared for the All-Sing competition and Greek Beat, a hip-hop dance competition.

Spring semester was busy for Beta Beta at **Tennessee, Chattanooga** from officer transitions to DLC (where the chapter won four awards) to the annual Run for Ronald 5K. Sisters also had the opportunity to hear Kristen Hadeed speak about her growth as an entrepreneur and a leader. Chapter members and alumnae volunteered at both a Ronald McDonald Phonathon and Telethon, helping to raise thousands of dollars for RMHC.

Gamma Eta at **Memphis** kicked off the fall semester by hosting Pie-a-Pi with ΠΒΦ to raise money for St. Jude's Up 'Til Dawn. The chapter also participated in National Hazing Prevention Week by making posters that read, "These hands don't haze." The chapter hosted their 2nd Chili Cook-Off at SOMA and a Run for Ronald to benefit the RMH of Memphis. The chapter made regular visits to the RMH and held a Halloween movie night and Christmas caroling.

Gamma Phi at **East Tennessee State** won the Golden Lion at Grand Convention. The chapter also won numerous awards at DLC, including Highest GPA. Alicyn York was named a Dorothy Shaw Leadership winner. The chapter was named Sorority of the Year at the Summit Awards. Gamma Phi raised \$27,000 for Southern Appalachian RMHC with their Silent Auction and Benefit. Sisters hold prestigious leadership positions on campus, including SGA, President's Pride, Admissions Ambassadors, and Student Alumni Association.

Through hard work, warm hearts, and eager minds, Delta Upsilon raised \$5,500 for RMHC and had the highest GPA at **Tennessee, Martin**. The chapter hosted and participated in such events as a Greek can tab war, a chili supper, a bake sale, and a 5K run at the local Discovery Park in Union City for RMHC.

Epsilon Tau welcomed 35 Alphas and reached Panhellenic total at **Middle Tennessee State**. The chapter took 1st place for their homecoming float and held a Trunk or Treat for the community. During the fall semester, Epsilon Tau and their new members had the highest Fraternity and Sorority Life GPAs. The chapter hosted their Lion's Share Challenge, the ADPi-athlon, and raised \$12,000 for RMHC. Sisters are involved in SGA, Relay for Life, honor societies, and Children's Miracle Network. Lindsey Pierce received the Dorothy Shaw Leadership Award at DLC.

Epsilon Psi welcomed 33 Alphas on Bid Day at **Tennessee Tech** with an All-American baseball theme, enjoyed several sisterhood events, and held a Dynamic Duos Diamond Sister Reveal. The chapter held their Diamond Days fundraiser for RMHC and raised \$8,400. Sisters paired with the brothers of ΣΧ to create a Disney-themed float for homecoming to celebrate 100 years and placed first overall. The chapter also had the highest GPA for the fall semester.

Zeta Rho sponsored their first **Vanderbilt's Got Talent** benefiting RMHC. The chapter held auditions to determine the top ten performers, both individuals and groups, to compete for a \$500 prize. The audience determined the winner.



The executive committee of Theta Beta at Coastal Carolina attends DLC I in Atlanta.



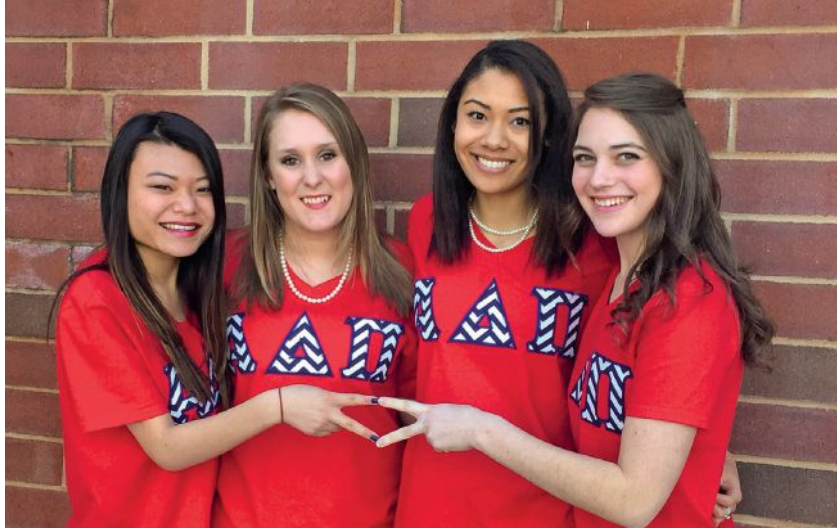
These Alpha Kappa sisters from Tennessee, Knoxville are all smiles on Bid Day.



Sisters also participated in a letter-writing campaign to raise funds. Altogether, the chapter raised \$12,861 that they donated to their local RMH through the ADPi Foundation and also to the new endowment fund.

Eta Gamma at **Austin Peay State** ended the fall semester with their Lip Sync Battle for Camp Rainbow, their local philanthropy, and raised \$1,800. Three sisters visited

Trinidad and Tobago with the APSU President's Emerging Leadership Program to build homes with Habitat for Humanity. Eta Gamma alumna Emma Schwankhart was selected to be a maid in the number one Mardi Gras Super Krewe Parade, Endymion. The chapter held their 3rd Annual Run 4 Ronald 5K and 1-Mile Fun Run to raise money for RMHC.



Sisters Brittany Wolfe, Kelly Cook, Asha Burks, and Reagan Anthony from Gamma Eta at Memphis attend DLC.

## TEXAS

Delta chapter at **Texas, Austin** ended the fall semester by participating in RMHC of Austin's Lights of Love 5K where they beat last year's total and raised \$7,500. The chapter also won the Intramural Volleyball Championship. Spring brought the chapter's Lion's Share Challenge volleyball tournament with a goal to exceed last year's total of \$27,000. At DLC, the chapter was given the award for "Most Money Raised for RMHC." The chapter also is raising money for a sprinkler system for the "Pi Palace."

Zeta chapter welcomed home 20 Alphas on Bid Day at **Southwestern**. Shortly after, the chapter won 1st place in SING and 2nd place in the Greek Chili Cook-Off. The chapter also won the Starkey Anti-Hazing Award during National Anti-Hazing Week. Sisters are involved in a variety of activities including sports, the newspaper, Southwestern's orchestra, and many more. In addition to working with the Temple RMH, the chapter also raised \$2,000 for RMHC with their Lip Sync Battle.

The sisters of Gamma Upsilon at **North Texas** had a great fall semester. The chapter raised \$936 for the RMH of Dallas at their 3rd Trunk Show. The chapter raised \$347 at their first food-based philanthropy, ADPicnic. They also won the UNT Homecoming Dance. Spring semester started with Diamond Days for the fall COR class, and they also met total.

Gamma Chi welcomed 71 Alphas after fall recruitment at Texas Christian and nine new Alphas after COR in the spring. Sisters volunteered at RMH to cook dinners, and the chapter raised money for RMHC with the Iron Chef Blend-Off. Ten sisters have been elected to Order of Omega. Many members held leadership positions in numerous organizations, participated in other Greek philanthropies, and were involved in community service throughout Fort Worth.



Zeta Chi officers from Baylor gather at DLC V in Tulsa.

Delta Beta at **Lamar** started the second semester by welcoming new sisters with COR and sending their officers off to DLC, where they won the award for Highest GPA on campus. Sisters have volunteered at a variety of events, including the Children's Museum, the Buddy Walk, the Gusher Marathon, and Bark for Life. Sisters held leadership positions in Order of Omega and the American Medical Student Association.

Delta Mu at **Sam Houston State** has had a great year. The chapter welcomed home 40 Alphas in the fall and another seven in the spring. The

chapter had the highest GPA of all sororities for both the chapter and new members. Sisters went to the RMH to visit with the children and cook breakfast. They also volunteered at a charity walk for the Juvenile Diabetes Research Foundation.

The sisters of Epsilon Epsilon at **Texas Tech** held their Chapter Retreat at Hidden Falls Ranch getting to know each other, making crafts, dancing and singing, and zip-lining. At their Flashlight Dash philanthropy, they had 260 runners and raised \$11,209 for RMHC. Sisters worked hard for homecoming and placed 3rd in SO Sing and the float contest. Ashley Vaughn was one of the top five candidates for Homecoming Queen.

Epsilon Zeta at **Texas State** spiced up the fun on their Ronald Fun Run 5K with obstacles, Pie-a-Pi, food, and a live band, and raised \$12,214 for RMHC. The sisters also put in countless hours volunteering at the spaghetti dinners for the local San Marcos Fire Department and EMTs. Besides volunteering in the community, members are very involved on campus by winning homecoming and being first in grades for all NPC chapters.

Zeta Lambda welcomed 52 Alphas after formal recruitment at **Texas A&M**. The chapter held their first crush party for Halloween, enjoyed the football games, and had their Diamond Sister Reveal and Chapter Retreat. The chapter also hosted their first ADPiHop, cooked pancakes, sold raffle tickets, and raised \$8,000 for RMHC.

Fall semester brought the annual photo shoot, Take-a-Date to Six Flags, and the Kentucky Derby semi-formal for the sisters of Zeta Chi. After a successful spring formal recruitment, the sisters welcomed their new Alphas and met their Diamond Sisters. While the chapter worked hard for **Baylor's** annual All-University Sing, sisters also could be found studying in the Moody Library, volunteering in the Waco community, and catching up over lunch at Baylor's new fountain.



Gamma Tau sisters at Vermont huddle during their Lion's Share Challenge, "Dodge for a Cause."



Eta Pi's Madelyn Waschko, Amy Groome, and Ashley Clute are decked out for their Preppy Olympics at Virginia Tech.

## VERMONT

Gamma Tau at **Vermont** has had an eventful year of chapter-wide growth and recognized successes. The chapter achieved quota and total during recruitment. They were named Chapter of the Year. Individual sisters also were recognized at Greek Ball, UVM's award banquet, as Greek Woman, Chapter President and Greek Scholar of the Year. Sisters also were named Outstanding New Member, Outstanding Sophomore and Junior, Emerging Leader and more. The chapter also held a very successful Lion's Share Challenge.

## VIRGINIA

Epsilon Chi at **Longwood** started the spring semester with a successful recruitment as 18 Alphas ran home to Alpha Delta Pi. The chapter hosted its new philanthropy, a kickball tournament, to raise money for RMHC. In March,



new Deltas performed in the Greek Lip Sync. Three sisters were tapped for Mortar Board, and the chapter had the highest greek GPA for the fall semester.

Bid Day brought 71 Alphas to Eta Pi. The chapter held a very successful Safari Hunt in the fall and raised \$20,000 for RMHC. Sisters have raised \$2,975 for Relay for Life, but hope to raise more. Preppy Olympics was another successful event, bringing 26 organizations together to participate for wish list collections, donations, and field games. In recognition of their community work, Eta Pi won the **Virginia Tech** Most Outstanding Community Relations Award of 2015.

Friday Night Lights was Theta Zeta's fall kick-off at **Washington and Lee**, and the chapter scored \$1,500 for RMHC. For the holidays, they sponsored Candy Grams and a Toys for Tots drive. Spring brought formal recruitment, Valentine's Day Grams, and a spring formal. The chapter celebrated Pi Day by selling mini pies and donating the proceeds to RMHC. The chapter joined **XQ** to sponsor a King of Hearts Pageant to benefit the Make A Wish Foundation.

Theta Nu at **Christopher Newport** welcomed six new Alphas during fall COR. The chapter held their first Lion's Share Challenge, ADPihop, and raised \$770 for RMHC. The chapter won IFC's Lip Sync with an Eminem-themed routine. Two sisters were selected as recruitment counselors and one was elected Panhellenic President. After formal recruitment, 39 Alphas were welcomed home with a Las Vegas-themed Bid Day.

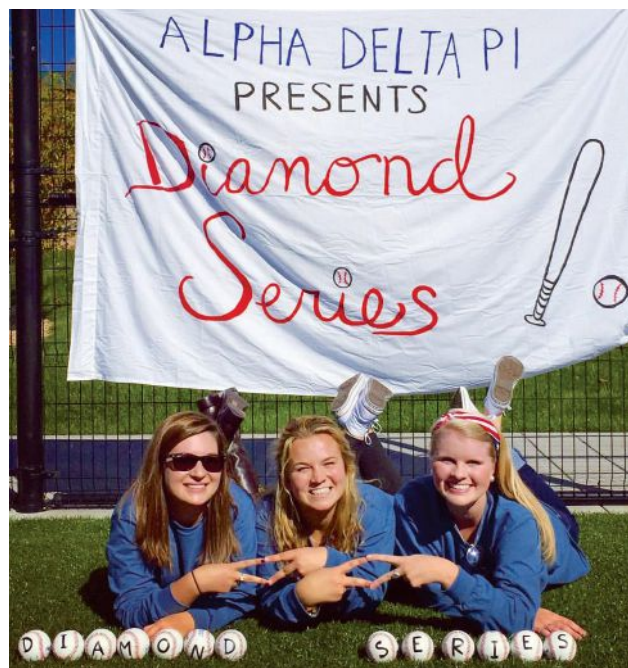
Theta Omicron at **James Madison** won Diamond 4-Point and several Excellence awards at Grand Convention. During 2015, they raised \$9,289 for RMHC. The chapter is well represented on Panhellenic Council with sisters serving as President and Vice President. The chapter joined **ZTA** and **ΦM** to sponsor Elizabeth Trabert Piper, the founder of the Pretty Girl Revolution, for an empowering speech for the women at JMU. The chapter also exceeded quota and won New Member of the Year.

## WASHINGTON

Upsilon chapter welcomed 50 Alphas during fall recruitment at **Washington State**. Sisters made weekend visits to the Spokane RMH and had the opportunity to celebrate with David, a young man who had become cancer-free. To thank the RMH, his family raised \$25,000 for RMHC. The chapter



Gamma Kappa sisters gather for a picture at West Virginia Wesleyan.



Theta Omicron at James Madison hosts its second Diamond Series to raise money for RMHC.



held their second casino night on the WSU campus. The chapter also won the Arete award for the Most Improved GPA.

Alpha Theta's annual Lion's Share Challenge Lion's Cup Golf Tournament was a huge success and raised \$7,000 for RMHC. Along with volunteering at the local RMH, the chapter hosted their Homecoming Feed at

**Washington** to support RMHC. On campus, the chapter sponsored Stu Cabe, who spoke to other Greeks and students on the importance of being kind. Additionally, the chapter was recognized by Total Sorority Move for breaking the "Recruitment Video Stereotype."



Delta Pi sisters at Ripon make pancakes for ADPi Bop, their annual pancakes and volleyball fundraiser for RMHC.

## WEST VIRGINIA

Gamma Kappa at **West Virginia Wesleyan** had a *Breakfast at Tiffany's*-themed party for choice night. Sisters dressed in black with pearls and decorated the suite with Tiffany boxes and Tiffany blue. For philanthropy night, the sisters and PNMs made toiletry bags for the Morgantown RMH. The chapter welcomed 11 amazing new Alphas on Bid Day. On Super Bowl Sunday, the chapter made dinner for the families staying at the RMH.

## WISCONSIN

Delta Pi at **Ripon** held their annual ADPi Bop pancakes and volleyball fundraiser with record attendance and participation. A sister representing Alpha Delta Pi in the Miss Ripon Charity Pageant won \$700 to donate to the Milwaukee RMH. The chapter continued to work hard academically and earned the highest Greek GPA. After formal recruitment in January, the chapter welcomed seven wonderful Alphas home to ADPi.

## CANADA

Beta Theta in **Manitoba** welcomed eight Alphas after formal recruitment in the fall, raised \$300 for RMHC, and volunteered 250 hours in the community. Sister Amy Clark was recognized as having the high-



Beta Theta sisters from Manitoba gather on the staircase for a holiday photo.

est GPA at the Panhellenic formal. Spring brought COR, and the chapter reached total. Officers headed to Chicago for DLC IV and had an amazing time learning more about themselves and ADPi. The chapter held their Lion's Share Challenge in March to raise money for the Winnipeg RMH.

In November, Beta Kappa at **British Columbia** was pleased to have Leadership Consultant Grace Bellmer visit and help the chapter initiate their new members. The chapter raised \$7,000 at their Home Sweets Home fall philanthropy for the Karen Furstrand Memorial Foundation and Jeneece Place. The chapter won best dancers during the Order of Omega Songfest.







# Sisters



## Delta Epsilon Alumna Crowned Mrs. Iowa International

After being crowned Mrs. Iowa International in February, Rosanne Plante, Delta Epsilon—Morningside College, will go on to compete for the title of Mrs. International 2016 this summer in Jacksonville, Florida. An attorney and paralegal studies instructor at Western Iowa Tech Community College, Roseanne also is a certified Iowa Master Gardener and plans to promote the healthy and family advantages of home and school gardens during her reign. She has created the “Green Ambassador” program and is working with the Sioux City Gospel Mission, encouraging individuals and families to plant a row of “hope” in their gardens to provide fresh produce for the Mission’s soup kitchen and pantry. Her year of service will be dedi-



cated to raising awareness about how individuals can contribute to ending hunger in their communities.

## Agri Manners

Author Dr. Patricia Tice, Pi—Iowa State, has combined her formal training in psychology and human behavior with her experience and training in manners and etiquette to create the book *Agri Manners*—

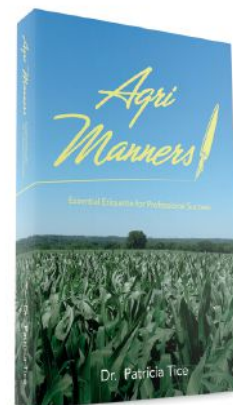
*Essential Etiquette for Professional Success.*

According to Patricia, the book is “a must-have resource on dealing with people, different attitudes, and behaviors in the world of agriculture.”

The book’s introduction is written by Chris Soules, an Iowa farmer and star of the ABC-TV shows “The Bachelor,” “The Bachelorette,” and “Dancing with the Stars.”

Topics addressed in the book include: “28 Manner Points You Need to Know,” “How Does Your Personality Fit,” and specifics for both women and men in agriculture.

“Agricultural stakeholders always need to be professional, well-mannered and respectfully civilized, from farm field to table to global leader. This new book elevates respect for the agricultural complex,” said Patricia. “The book is a first resource for planting and growing a meaningful life and career in agriculture and is your go-to resource for knowing how to earn trust and respect and presenting yourself in a way that is honorable and professional.” The book can be ordered at [www.agrimarketing.com](http://www.agrimarketing.com) in the bookstore section.



Patricia Tice, Pi—Iowa State, was interviewed about her book *Agri Manners* by her chapter sister and pledge coordinator, Mollie Smith Cooney, on KCCI-TV, the CBS affiliate in Des Moines, Iowa.





*Agri Manners* author Patricia Tice with All-American Iowa State basketball player Georges Niang (l) and Naz Mitro-Long (r).



2016 Sweet 16 Iowa State men's basketball players with *Agri Manners* author Patricia Tice. She said they all promised they would be gentlemen on and off the court, take time to help others, and always be honorable and well-mannered.



(l to r) Houston Alumnae Association members Barbara Hinds Finney, Delta—Texas and Virginia Mathis Wallace, Alpha Omicron—Oklahoma State, were honored for being 75-year members of ADPi at the Association's 2015 Founders' Day Luncheon.



Gamma Beta sisters from the classes of 1965 and 1966 reconnected for dinner in Evanston, Illinois, on October 16, 2015, for Northwestern University's 50th Reunion Homecoming Weekend. Although the chapter is no longer on campus, the stately chapter house still stands overlooking Lake Michigan, and the memories linger on. Karen Drucker Omahen organized the event.

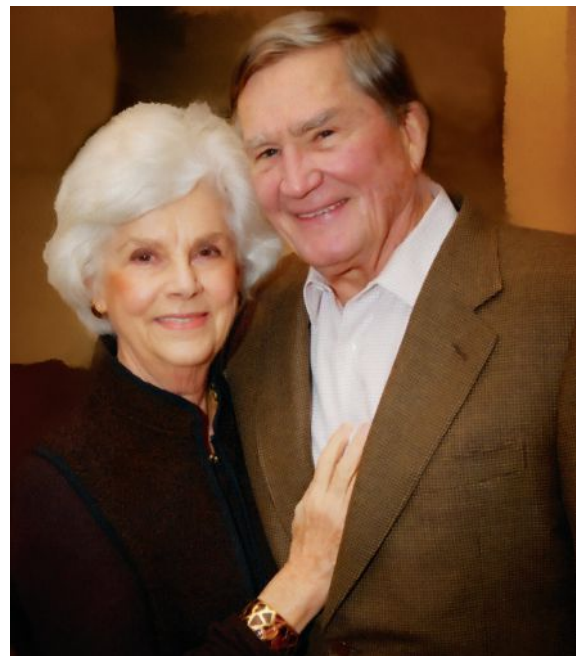




Flying in from five different states, 17 sisters from Delta Omicron—East Carolina met in Fort Lauderdale to begin a four day cruise reunion to the Cayman Islands last March. The trip included wonderful dinners, lounging poolside, Trivial Pursuit, and sharing memories.



Christine Gearhart Cournoyer, Delta—Texas, was elected to the Pleasant Valley Community School Board of Directors in 2013 for a four-year term and was recently appointed by Iowa Governor Terry Branstad to serve on the Iowa STEM (Science, Technology, Engineering, Math) Advisory Board.



Ann Draughon Cousins, Beta Omega—Auburn, was recognized by the Association of Fundraising Professionals for Greater Atlanta as the 2015 Philanthropist of the Year, along with her husband Tom. They received the award at the 2015 National Philanthropy Day luncheon.



IT'S TIME TO START THE CONVERSATION

# Alcohol on College Campuses

By ELIZABETH WRIGHT  
*Adelphian Editor*



Thanks to popular movies and television shows depicting Greek life on college campuses, the public's perception of fraternity and sorority life is usually that everything revolves around partying. Highly publicized mishaps involving alcohol further perpetuate that image—even when they represent a very small percentage of the successful social events that take place each year. As with most negative college stereotypes, alcohol abuse is certainly not limited to the Greek community; however, the risk management programs put in place by inter/national fraternities and sororities serve to educate members on the dangers of alcohol abuse and hopefully mitigate serious issues before they occur.

The National Institute on Alcohol Abuse and Alcoholism (NIAAA), a subsidiary of the National Institutes of Health, reports that around 80% of college students drink alcohol and around half of those consume alcohol through binge drinking. The consequences of

Alpha Delta Pi chapters routinely host alcohol free events as part of their social programming.



alcohol abuse are widespread and can include academic problems, an increased risk for assault or injury, and even death. A Harvard School of Public Health report indicated that Greek students are far more likely to engage in these behaviors than their non-Greek counterparts at a rate of 80-86%.

The NIAAA further notes that students are most vulnerable to the dangers of alcohol abuse during their first month and a half as a college student, making a sorority's risk management education programming even more important as new members join the sisterhood and need a solid support foundation.

The NIAAA recommends a two-pronged approach to addressing the issue of alcohol abuse on college campuses. First is to target the individual student through educational programming, motivational approaches, and behavioral interventions by health professionals. Second is to employ strategies that address the campus and community as a whole—including limiting the availability of alcohol.

Alpha Delta Pi and Grand Council expect each collegiate member to make responsible choices with regard to alcohol. The sorority's policy statement regarding alcohol for collegiate chapters explicitly requires all members to abide by federal, state, and local alcohol laws as well as university regulations. Additionally, the statement outlines specific procedures that chapter executive boards must follow with regard to planning social events where alcohol will be present. Each chapter reviews this policy statement as well as the Alpha Delta Pi Standards Code annually at Chapter Retreat.

The responsibility to educate college women on the matter doesn't stop with Alpha Delta Pi. The National Panhellenic Conference Best Practices "recommends that College Panhellenics provide to local chapters, on an annual basis, relevant resource and programming information such as local speakers, campus seminar information, media resources, and health center and counseling center contacts."

Alpha Delta Pi chapters and the alumnae who support them are provided with the tools and training to properly address the issue of alcohol abuse on college campuses. The Directors of Social Enrichment gather at annual District Leadership Conferences to review risk management procedures and to share ideas for safe and effective social events—including successful alcohol free gatherings. The international organization is committed to ensuring our collegiate members are educated on the responsible use of alcohol and the dangers of abuse in order to pave the way for happy, healthy Delta member experiences.

## COLLEGE DRINKING

**1,825 COLLEGE STUDENTS  
BETWEEN THE AGES OF 18 AND 24  
DIE EACH YEAR  
FROM ALCOHOL-RELATED  
UNINTENTIONAL INJURIES**

**MORE THAN 690,000 STUDENTS  
BETWEEN THE AGES OF 18 AND 24  
ARE ASSAULTED  
BY ANOTHER STUDENT  
WHO HAS BEEN DRINKING.**

**MORE THAN 97,000 STUDENTS  
BETWEEN THE AGES OF 18 AND 24  
ARE VICTIMS OF ALCOHOL-RELATED  
SEXUAL ASSAULT OR DATE RAPE.**

**599,000 STUDENTS  
BETWEEN THE AGES OF 18 AND 24  
RECEIVE UNINTENTIONAL INJURIES  
WHILE UNDER THE  
INFLUENCE OF ALCOHOL.**

**ABOUT 25 PERCENT  
OF COLLEGE STUDENTS REPORT  
ACADEMIC CONSEQUENCES  
OF THEIR DRINKING.**

**[HTTP://WWW.NIAAA.NIH.GOV](http://www.niaaa.nih.gov)**

## Notable News

### 2016-17 Leadership Consultants Named

The Grand Council of Alpha Delta Pi is pleased to introduce our 11 2016-17 Leadership Consultants: Nikki Baker, Delta Gamma—Arizona; Becca Bryant, Beta Epsilon—South Carolina; Madison Damron, Alpha Chi—UCLA; Taylor Dunn, Gamma Phi—East Tennessee State; Lauren Hughes, Delta Sigma—Mississippi; Shelby Knutson, Delta Delta—Arkansas; Emily Lynch, Epsilon Mu—Northern Iowa; Hannah Peterson, Zeta Mu—Appalachian State; Lizzie Schratz, Gamma Tau—Vermont; Sarah Beth Selph, Eta Zeta—Southern Mississippi; and Arlyn Thaler, Theta Nu—Christopher Newport. In addition to these first year LCs, we are welcoming back Kaley Tabor, Beta Psi—Kentucky, as a Senior Leadership Consultant. Look for more information on these amazing women in your Fall *Adelphean*!

### Do You Have a Chapter Anniversary Coming Up?

Do you have a chapter anniversary event in the next few months? Send us an email to [adelpheaneditor@gmail.com](mailto:adelpheaneditor@gmail.com) with the dates and how to register, and we will publish an announcement in Notable News.

### Want to Help ADPi Go Green?

Help us prioritize sorority resources and let us know if you are interested in receiving *The Adelphean* online by "Opting In." Send an email to [adelphean@alphadeltapi.com](mailto:adelphean@alphadeltapi.com) and put "opt in" as the subject. In the body of the message, provide your name, address, chapter and member number (it is the number right above your name on the mailing label above). You will receive an email notice when each issue is posted online.



### Look Out LSU! Here Comes ADPi!

During the spring semester, Growth & Development Manager Jennifer Smith Dickinson and New Chapter Specialist Anna Kate Sumler—along with many of our Leadership Consultants—spent a week on LSU's campus meeting with students, administrators, and alumnae to spread the word about ADPi's Fall 2016 colonization. The group enjoyed a productive week canvassing the campus and met with Panhellenic women supporting our efforts as TEAM ADPi members. International President Stacy DeMartini Bruton joined the team for an evening alumnae event held in the Alpha Phi house, which is ADPi's future home on campus.

### Don't Forget to ReMember!

"I pay my ReMember dues as a way to give back and to continue to support the many programs that ADPi provides for collegiate and alumnae members. By participating, I can help ensure that ADPi remains First. Finest. Forever. Since 1851."

*Claire Brown Gwaltney,  
Past International President*

